

Sotheby's EST. 1744



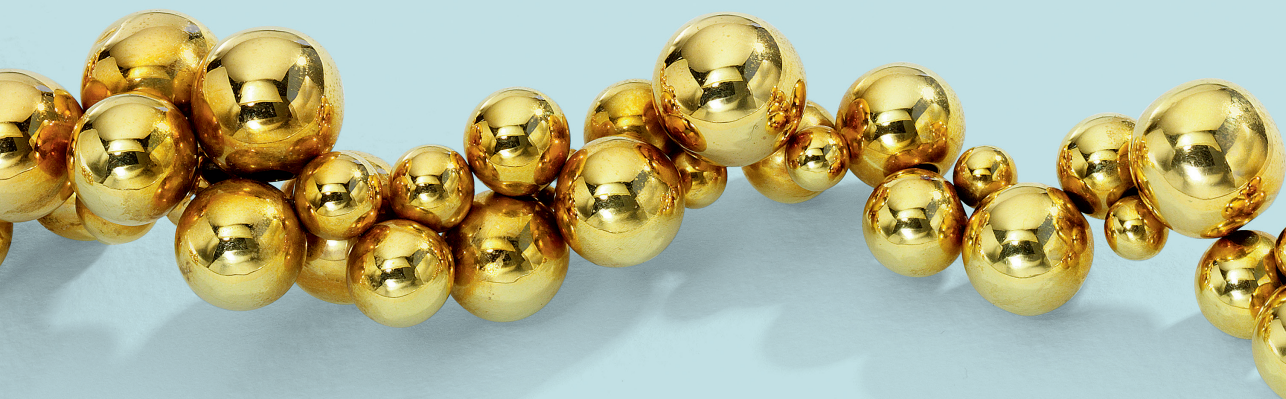
FINE JEWELS

NEW YORK 19 APRIL 2018



FRONT COVER: LOT 762
BACK COVER: LOT 568
THIS PAGE: LOT 530

FINE
JEWELS





THIS PAGE
LOTS 623 & 684





FINE JEWELS

AUCTION IN NEW YORK
19 APRIL 2018
SALE N09815

SESSION ONE: 10:30 AM
SESSION TWO: 2:00 PM

Certificates of Authenticity Various manufacturers may not issue certificates of authenticity upon request. Sotheby's is not under an obligation to furnish the purchaser with a certificate of authenticity from the manufacturer at any time. Unless the requirements for a rescission of the sale under the Terms of Guarantee are satisfied, the failure of a manufacturer to issue a certificate will not constitute grounds to rescind the sale.

Gemological Certificates and Reports References in the catalogue descriptions to certificates or reports issued by gemological laboratories are provided only for the information of bidders, and Sotheby's does not guarantee and accepts no responsibility for the accuracy, terms or information contained in such certificates or reports. Please also note that laboratories may differ in their assessment of a gemstone (including its origin and presence, type and extent of treatments) and their certificates or reports may contain different results.

EXHIBITION

Friday 13 April
10 am-5 pm

Saturday 14 April
10 am-5 pm

Sunday 15 April
1 pm-5 pm

Monday 16 April
10 am-5 pm

Tuesday 17 April
10 am-5 pm

Wednesday 18 April
10 am-5 pm

1334 York Avenue
New York, NY 10021
+1 212 606 7000
sothebys.com

FOLLOW US @SOTHEBYS
#SOTHEBYSJEWELS

SPECIALISTS FOR THIS SALE



David Bennett
Worldwide Chairman
International Jewelry Division
david.bennett@sothebys.com



Gary Schuler
Chairman
gary.schuler@sothebys.com



Carol Elkins
Senior Specialist
carol.elkins@sothebys.com



Frank Everett
Sales Director
frank.everett@sothebys.com



Catharine Becket
Senior Specialist
catharine.becket@sothebys.com



Robin Wright
Senior Specialist
robin.wright@sothebys.com



Esther Tadjiev
Sales Development
esther.tadjiev@sothebys.com



Alexander Eblen
Senior Specialist
alexander.eblen@sothebys.com



Quig Bruning
Specialist
quig.bruning@sothebys.com



Kendall Reed
Specialist
kendall.reed@sothebys.com



Yang Bu
Business Director
yang.bu@sothebys.com



Nicholas Clark
Business Manager
nicholas.clark@sothebys.com



Mallory Jakalow
Project Manager
mallory.landiers@sothebys.com



Vivian Chen
Associate Cataloguer
vivian.chen@sothebys.com

SPECIALISTS AND AUCTION ENQUIRIES

For further information on lots in this auction please contact any of the specialists listed below.

SALE NUMBER

N09815 "MALLORY"

BIDS DEPARTMENT

+1 212 606 7414

FAX +1 212 606 7016

bids.newyork@sothebys.com

Telephone bid requests should be received 24 hours prior to the sale. This service is offered for lots with a low estimate of \$5,000 and above.

PRIVATE CLIENT GROUP

Brad Bentoff

Carolyn Floersheimer

Olivia de Grelle

Geraldine Nager

Alejandra Rossetti

Lily Snyder

+1 212 894 1796

ASIA CLIENT LIAISON

Yin Zhao

+1 212 894 1685

yin.zhao@sothebys.com

CONSULTANT

Lexi Yost

HEAD OF FINE JEWELS SALES

Kendall Reed

kendall.reed@sothebys.com

+1 212 606 7392

FAX +1 212 606 7014

SALE ADMINISTRATOR

Orly Brooker

orly.brooker@sothebys.com

+1 212 894 1507

FAX +1 212 606 7014

POST SALE SERVICES

Ashlyn Michalakis

Post Sale Manager

ashlyn.michalakis@sothebys.com

+1 212 606 7444

PAYMENT, DELIVERY AND

COLLECTION

+1 212 606 7444

FAX +1 212 606 7043

uspostsaleservices@sothebys.com

CATALOGUE PRICE

\$45 at the gallery

FOR SUBSCRIPTIONS CALL

+1 212 606 7000 USA

+44 (0)20 7293 5000

for UK & Europe

CONDITION REPORTS

Sotheby's Jewelry department is pleased to offer to potential purchasers Condition Reports of the lots in this catalogue.

A Condition Report is an opinion describing in more depth the lot with regards to, but not limited to, the general condition, quality of stones and/or other relevant information.

Please contact:

Tori Porter

newyorkjewels@sothebys.com

+1 212 606 7392

DECORATIVE PHOTOGRAPHY

SquareMoose

New York

+1 212 643 2505



CONTENTS

5	AUCTION INFORMATION
7	SPECIALISTS & AUCTION ENQUIRIES
10	SESSION ONE: LOTS 501–620
66	SESSION TWO: LOTS 621–763
131	CONDITIONS OF SALE
133	TERMS OF GUARANTEE ADDITIONAL TERMS AND CONDITIONS FOR LIVE ONLINE BIDDING
134	BUYING AT AUCTION
137	SELLING AT AUCTION SOTHEBY'S SERVICES
138	INFORMATION ON SALES AND USE TAX IMPORTANT NOTICES
140	RING SIZE CHART
141	DIAMOND CLARITY GRADING DIAMOND COLOR GRADING GLOSSARY OF TERMS
142	INDEX OF DIAMONDS
143	COLORED STONE LIST
144	INTERNATIONAL DEPARTMENTS
145	ABSENTEE BID FORM
148	INDEX OF MAKERS



SESSION ONE

NEW YORK
THURSDAY
19 APRIL 2018
10:30AM

LOTS 501-620

Please note these lots are
not shown in actual size





501

**Gold and Lapis Lazuli 'Alhambra'
Necklace, Van Cleef & Arpels, France**

Composed of alternating textured gold and lapis lazuli quatrefoil-shaped links, *length 32 inches, signed VCA, numbered 4V258-118, with French assay and workshop marks; circa 1970.*

US\$ 7,500-10,000



502

**Gold and Enamel 'Croisillon' Bracelet,
Schlumberger for Tiffany & Co.**

Applied with blue pailonné enamel, accented by fluted gold bars and x-shaped motifs, *gross weight approximately 58 dwts, internal circumference 6½ inches, signed Tiffany & Co. Schlumberger.*

US\$ 10,000-15,000



503

**Gold, Diamond and Gem-Set Pendant-
Brooch**

Designed as a quatrefoil composed of textured gold, centering a cabochon sapphire within a multi-row surround of round diamonds, rubies, and emeralds.

US\$ 3,000-5,000

504

PROPERTY FROM A DISTINGUISHED FAMILY

Sapphire and Diamond Necklace and Pair of Earclips

The graduated diamond-set necklace centering three oval-shaped sapphires, the clasp set with an additional sapphire, *length 15½ inches*; the earclips of similar design, centering oval-shaped sapphires framed by round diamonds. Fitted with posts.

US\$ 10,000-15,000



△ 505

Gold and Sapphire Brooch, Tiffany & Co.

Designed as a flower, the center set with round sapphires, gross weight approximately 12 dwts, *signed Tiffany & Co Italy*.

US\$ 400-600



506

Pair of Sapphire and Diamond Earclips, Aletto Brothers

Designed as flowers, set with cabochon sapphires, accented by round diamonds, *signed Aletto Brothers*. With signed pouch.

US\$ 6,000-8,000



507

PROPERTY OF A LADY

**Gold and Sodalite Choker and Cuff-
Bracelet, Ilias Lalaounis, Greece**

Each of hinged design, composed of hammered gold embellished with fluted ends capped by polished sodalite terminals, gross weights approximately 72 and 40 dwts, *internal circumferences 14 and 6 inches, signed Ilias Lalaounis, with workshop and maker's marks.*

US\$ 7,000-9,000



508

PROPERTY OF A PRIVATE COLLECTOR

**Suite of Gold Jewelry, Ilias Lalaounis,
Greece**

Comprising: a bracelet, ring and pair of earclips, *bracelet internal circumference 6½ inches, ring size 7½, total gross weight approximately 57 dwts, the bracelet and ring with workshop marks, all pieces with maker's mark for Ilias Lalaounis and inscribed Greece.*

US\$ 8,000-10,000



509

PROPERTY OF A PRIVATE COLLECTOR

Suite of Gold and Gem-Set Jewelry, Ilias Lalaounis, Greece

Of Byzantine inspiration, comprising: a bib collar composed of textured gold set with round sapphires, emerald-cut emeralds and cabochon rubies, *internal circumference 15 inches, signed Ilias Lalaounis and with workshop and maker's mark*; a wide band ring set with set with a square-cut sapphire and cabochon rubies and emeralds, *size 7½*; and a pair of half-hoop earclips set with cabochon rubies and emeralds, *with workshop and maker's marks, fitted with posts*. With signed box and pouches.

Accompanied by three Certificates of Authenticity from Ilias Lalaounis.

US\$ 6,000-8,000



510

Gold and Diamond, David Webb

The two pear-shaped diamonds set within a serpentine mounting composed of textured gold, *size 7½, signed Webb*.

US\$ 6,000-8,000





511

PROPERTY OF A LADY

**Gold and Cultured Pearl Necklace and
Pair of Pendant-Earclips, David Webb**

The necklace composed of alternating black and white baroque cultured pearls measuring approximately 16.0 x 16.8 to 14.0 x 15.6 mm, capped and interspersed with gold scalloped and braided accents, *length 15½ inches*; and a pair of matching earclips, with detachable cultured pearl pendants; *signed Webb*.

US\$ 10,000-15,000



512

**Gold, Rock Crystal and Diamond
'Twilight' Bracelet, David Webb**

The four rock-crystal beads carved in the shape of acorns, capped with textured gold, connected by links pavé-set with round diamonds, *length 8 inches*, *signed Webb*, *numbered GA76*.

Accompanied by a Certificate of Authenticity from David Webb.

US\$ 12,000-15,000



513

PROPERTY OF A LADY

**Gold and Diamond Bangle-Bracelet,
Buccellati**

Of hinged design, the brushed gold bracelet accented with navette-shaped motifs set with round diamonds, *internal circumference 6½ inches*, *signed Buccellati*. With signed box.

US\$ 15,000-20,000

514

PROPERTY FROM THE ESTATE OF CHARLOTTE
GARSON, ATLANTA, GEORGIA

Gold and Malachite Necklace

Composed of malachite beads alternating with gold links embellished with a ropework texture, gross weight approximately 123 dwts, length 17¼ inches, with Italian assay and registry marks.

US\$ 5,000-7,000



515

Pair of Coral, Amethyst and Chrysoprase Pendant-Earclips, David Webb

The coral cabochon surmounts, framed and studded with gold, suspending amethyst cabochons, framed by polished chrysoprase hoops, signed Webb.

Please note this property cannot be shipped internationally due to endangered species materials.

• US\$ 12,000-15,000



516

**Pair of Gem-Set and Diamond 'Pneu'
Earclips, Marina B**

Pavé-set with round diamonds and embellished with polished onyx, the detachable pendants suspending six interchangeable pairs of beads composed of rutilated quartz, smoky quartz, coral, citrine, carnelian and dyed blue chalcedony, signed *Marina B*, numbered 4133, with Italian assay and maker's marks. Fitted with posts and including a screwdriver and signed box.

Please note this property cannot be shipped internationally due to endangered species materials.

• **US\$ 4,000-6,000**



517

PROPERTY FROM A PRIVATE COLLECTION,
GREENWICH, CONNECTICUT

Diamond Ring, Bulgari

Of bombé design, set with rows of round diamonds, size 5½, signed *Bulgari*.

US\$ 5,000-7,000



518

PROPERTY OF A LADY

Gem-Set and Diamond Necklace and Pair of Earclips, Bulgari

The necklace composed of faceted round citrine beads interspersed with gold rondelles, suspending a heart-shaped sapphire within a rock crystal frame, accented by round diamonds and a cabochon ruby, *length 16½ inches, signed Bulgari, numbered C1521*; and a pair of matching earclips, *signed Bulgari, numbered C1781, inscribed 4.13 cts referring to the carat weight, fitted with posts*. With signed box and pouch.

US\$ 6,000-8,000



519

PROPERTY OF A LADY

Two Gold Necklaces, One By Zolotas

One necklace composed of fluted gold beads alternating with gold boules, *length 31 inches, with maker's mark for Zolotas and workshop mark*; another necklace composed of oval-shaped links, *length 31½ inches, with Italian assay and registry marks*.

US\$ 8,000-12,000





520

PROPERTY OF A LADY

Diamond Necklace

Composed of bar links set with round and single-cut diamonds, centering on a round diamond weighing approximately 2.20 carats, *length 15 inches.*

US\$ 10,000-15,000



521

PROPERTY OF A LADY

Pair of Sapphire and Diamond Earclips and Ring

The ring set with an oval-shaped sapphire weighing approximately 12.50 carats within a surround of round diamonds, *size 7*; the earclips of similar design. Fitted with posts.

US\$ 15,000-20,000

522

PROPERTY OF A LADY

Diamond and Sapphire Bracelet

Designed as a line bracelet, composed of bezel-set old European-cut diamonds accented with calibré-cut sapphires, *length 7½ inches.*

US\$ 10,000-15,000

523

PROPERTY OF A LADY

Emerald and Diamond Sautoir

The longchain set at intervals with round diamonds suspending a pear-shaped rose-cut emerald accented with round diamonds and topped with a triangular-shaped emerald, *length 29 inches*.

US\$ 7,000-9,000



524

PROPERTY OF A LADY

Diamond Double Clip-Brooch

Of geometric design, set with numerous round and baguette diamonds; *circa 1930*, one diamond missing.

US\$ 8,000-12,000



525

PROPERTY OF A LADY

Amethyst and Diamond Jabot-Pin

Of conical design, set with rose-cut diamonds and amethyst cabochons; *circa 1910*.

US\$ 5,000-7,000





THIS PAGE
LOTS 760 & 636





526

PROPERTY OF A LADY

**Gold, Ruby and Diamond Necklace,
Paloma Picasso for Tiffany & Co.**

Designed as a choker, terminating in two cabochon rubies accented with round diamonds, *internal circumference 13 inches, signed Paloma Picasso and Tiffany & Co. With signed pouch.*

US\$ 3,000-5,000



527

PROPERTY OF A LADY

**Gold, Ruby and Diamond Cuff-Bracelet,
Buccellati**

Of hinged design, the brushed gold band decorated with floret motifs set with cabochon rubies and round diamonds, *internal circumference 6½ inches, signed gb for Gianmaria Buccellati, numbered 22508, with Italian assay and registry marks; circa 1970. With signed box.*

US\$ 10,000-15,000



528

PROPERTY OF A LADY

Ruby and Diamond Brooch

Designed as a circle with an openwork floral motif, set with four oval-shaped rubies, and numerous old European, single and rose-cut diamonds; *circa 1910.*

US\$ 8,000-12,000

529

PROPERTY OF A LADY

Cultured Pearl and Diamond Necklace

Designed as clusters of round diamonds supporting a fringe of cultured pearls measuring approximately 9.4 to 8.8 mm, *length 14 inches*.

US\$ 6,000-8,000



530

PROPERTY OF A LADY

Gold 'Atomo' Necklace and Pair of Earclips, Marina B

The necklace designed as a cluster of gold boules, *length 15½ inches, unsigned*; the earclips of similar design, fitted with posts, *signed Marina B, numbered F960, with maker's mark and Italian assay and registry marks*; total gross weight approximately 129 dwts. With signed boxes.

US\$ 5,000-7,000





531

**Fire Opal and Spessartite Garnet Ring,
Michele della Valle**

Centering a cushion-cut fire opal, the mounting accented by numerous round spessartite garnets, size 6, signed *MdV*.

US\$ 4,000-6,000



532

Pair of Diamond Earrings

The hoops pavé-set throughout with round diamonds.

US\$ 3,000-5,000



533

**Colored Diamond and Orange Sapphire Brooch,
Michele della Valle**

Designed as a gecko with a curled tail, set with numerous round orange sapphires and diamonds of brown hue, signed *MdV*.

Please note the diamonds have not been tested for natural origin of color.

US\$ 2,000-3,000

534

Smoky Quartz Bracelet, Tony Duquette

Bezel-set with seven emerald-cut smoky quartz, length 8¼ inches, unsigned.

This bracelet was included in Tony Duquette's 'Talismans of Power' collection created circa 2000, and was featured in Balmain's Paris runway fashion show when Oscar de la Renta was designing for the fashion house.

US\$ 7,500-10,000



535

PROPERTY OF A LADY

Diamond Brooch

Designed as a sheaf of wheat composed of pinched collet-set old mine, old European and single-cut diamonds, bound together by a gold bow, one small diamond missing.

US\$ 10,000-15,000





536

Pair of Diamond Earclips

The circular forms each featuring a butterfly motif, set with round diamonds, suspending a fringe of similarly-cut diamonds. Fitted with posts.

US\$ 8,000-12,000



537

PROPERTY FROM A PRIVATE COLLECTION

Diamond Ring

Set with a round diamond weighing 4.98 carats, size 6½.

Accompanied by GIA report no. 2183765308 stating that the diamond is E color, SI2 clarity.

US\$ 30,000-50,000



538

PROPERTY FROM A FLORIDA ESTATE

Diamond Bracelet

The openwork design set with three emerald-cut diamonds, accented by numerous round, baguette and marquise-shaped diamonds, *length 7½ inches.*

US\$ 12,000-15,000

539

Turquoise, Ruby, Cultured Pearl and Diamond Necklace, Michele della Valle

The three-strand necklace composed of turquoise beads, the clasp centering a baroque cultured pearl measuring approximately 24.7 x 17.5 mm, framed by variously-cut rubies and turquoise cabochons, further set with round diamonds, gross weight approximately 285 dwts, length 25 inches, signed MdV.

US\$ 10,000-15,000



540

Ruby and Diamond Brooch and Ring

The brooch of stylized floral design, set with round rubies and diamonds, accented by old European-cut, marquise-shaped and baguette diamonds; the ring of bombé design, set with round rubies and diamonds, size 7.

US\$ 10,000-15,000





541

PROPERTY FROM A PRIVATE COLLECTION

Diamond and Cultured Pearl 'Fireworks' Brooch, Tiffany & Co.

Designed as a stylized firework centering a gray cultured pearl measuring approximately 10.3 by 10.3 mm, the rays set with round diamonds, *signed Tiffany & Co.; circa 1994.* With signed box.

US\$ 5,000-7,000

542

PROPERTY OF A PRIVATE COLLECTOR

Diamond 'Ocean' Wristwatch, Harry Winston

The circular white dial embellished with round diamonds, featuring subsidiary dials for constant seconds, date and week, the lugs, bezel and buckle further set with round diamonds, automatic movement, *the dial, caseback, buckle and strap signed Harry Winston, the caseback numbered 045416, N799, with Swiss assay and maker's marks.*

Please note this property cannot be shipped internationally due to endangered species materials.

⦿ **US\$ 10,000-15,000**



543

PROPERTY OF A LADY

Cultured Pearl and Diamond Ring, David Webb

Of crossover design, set with a gray cultured pearl and a white cultured pearl, accented with round diamonds, *size 3¾, signed Webb.* With signed box.

US\$ 15,000-20,000





544

PROPERTY OF A LADY

Diamond Necklace

Composed of a long line of round diamonds, embellished with floral motifs set with round, marquise and pear-shaped diamonds, *length 31½ inches.*

US\$ 40,000-60,000



545

PROPERTY OF A LADY

Diamond Ring

Set with a round diamond weighing 2.05 carats, size 6½.

Accompanied by GIA report no. 1102406725 stating that the diamond is D color, Internally Flawless.

US\$ 30,000-40,000



546

Diamond Wristwatch, Graff

The rectangular case pavé-set with round diamonds, with a reeded pink tone dial embellished with Roman numeral indicators set with round diamonds, featuring a subsidiary dial for constant seconds, and a reverse-set diamond crown, quartz movement, *the dial signed Graff, the buckle and caseback signed Graff London, the caseback numbered GXXVIII and 0114, with Swiss assay marks.*

Please note this property cannot be shipped internationally due to endangered species materials.

• **US\$ 8,000-12,000**



547

PROPERTY OF AN AMERICAN PRIVATE COLLECTOR

Diamond and Colored Diamond Ring

Centering a round Light Gray diamond weighing 0.30 carat within a double surround of round diamonds of blue and pink hue, the mounting further highlighted with round diamonds, size 6.

Accompanied by GIA report no. 6197044472 stating that the diamond is Light Gray, Natural Color, SI1 clarity.

Please note the diamonds of blue and pink hue have not been tested for natural origin of color.

US\$ 6,500-9,000

548

PROPERTY OF A LADY

Diamond Longchain

Composed of bezel-set old European-cut diamonds, *length 21 inches*.

US\$ 15,000-20,000



549

Aquamarine and Pink Sapphire Earrings, Michele della Valle

The hoop earrings set with numerous round aquamarines, the sides further set with round pink sapphires, *signed MdV*.

US\$ 4,000-6,000



550

Aquamarine and Diamond Bracelet and Earclips, Seaman Schepps

The bracelet designed as a series of aquamarine cabochons highlighted at intervals with cultured pearls and round diamonds, *length 7 inches*; and a pair of similarly set aquamarine and diamond earclips; *each signed Seaman Schepps, with maker's marks*.

LITERATURE

See Seaman Schepps a Century of New York Jewelry Design by *Amanda Vaill and Janet Zapata*, page 182 for an illustration of a similar bracelet.

US\$ 8,000-12,000





551

Mother-of-Pearl, Cultured Pearl and Diamond Necklace, Michele della Valle

Composed of beads applied with mother-of-pearl measuring approximately 14.4 to 14.1 mm, alternating with cultured pearls measuring approximately 12.1 to 11.2 mm, interspersed with rondelles set with round diamonds, *length 34½ inches, signed MdV.*

Please note this property cannot be shipped internationally due to endangered species materials.

US\$ 6,000-8,000



552

Pair of Turquoise and Diamond Pendant-Earclips

Suspending a pair of pear-shaped turquoise cabochons measuring approximately 37.5 x 28.0 x 6.0 mm, from oval-shaped turquoise cabochons measuring approximately 18.1 x 13.3 x 9.3 mm, encircled by round diamonds, accented with marquise-shaped diamonds.

US\$ 4,000-6,000



553

Turquoise and Diamond Bracelet, Aletto Brothers

The link bracelet composed of curved turquoise segments, the gold sides lined and accented by round diamonds, *length 7¾ inches, signed Aletto Bros. With signed pouch.*

US\$ 15,000-20,000

554

Pair of Colored Diamond and Diamond Hoop Earrings

The hoops pavé-set with alternating bands of round diamonds and black diamonds.

Please note that the diamonds of black hue have not been tested for natural origin of color.

US\$ 3,000-5,000



555

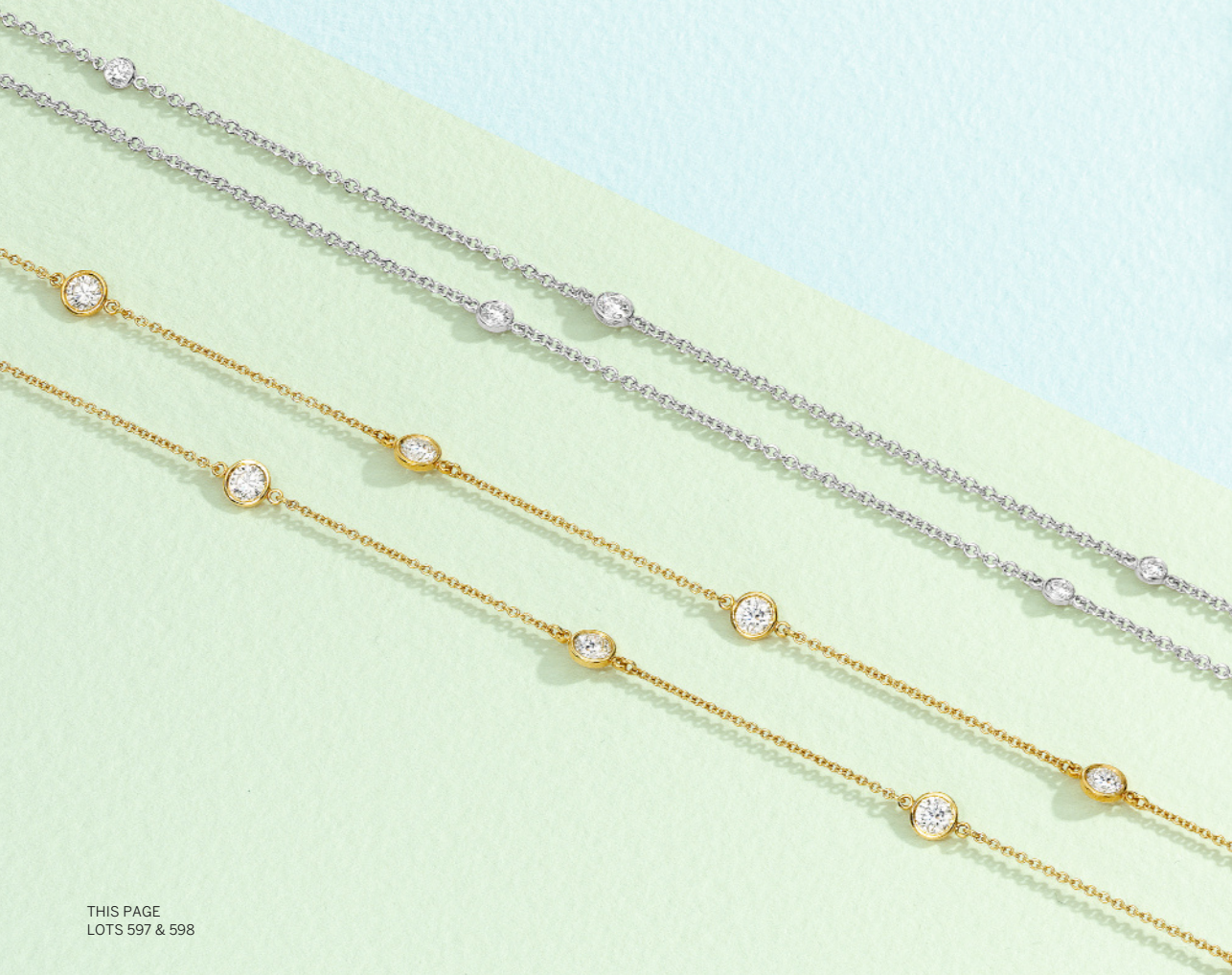
Coral and Ruby Ring, Michele della Valle

Centering an oval-shaped coral cabochon, the mounting decorated with round rubies, size 6, signed MdV.

Please note this property cannot be shipped internationally due to endangered species materials.

• **US\$ 3,000-5,000**





THIS PAGE
LOTS 597 & 598





556

PROPERTY FROM A PALM BEACH COLLECTION

**Gold, Agate and Diamond Necklace,
Bulgari**

The curb link chain centering an antique agate *gryllos* cameo, accented by round diamonds, gross weight approximately 45 dwts, length 15½ inches, signed Bulgari, numbered BU984.

US\$ 3,000-5,000



557

PROPERTY FROM A PALM BEACH COLLECTION

Diamond and Gem-Set Clip-Brooch

Designed as a bird of paradise, the body set with a cabochon star sapphire, measuring approximately 16.8 x 19.3 x 16.0 mm, and carved and cabochon rubies, the head set with a carved emerald accented by a bezel-set round diamond, the wings and tail accented with round rubies, emeralds, sapphires and diamonds.

US\$ 8,000-12,000



558

PROPERTY FROM A PALM BEACH COLLECTION

**Pair of Enamel Earclips and Enamel and
Diamond Ring, David Webb**

The earclips of bombé design applied with rows of green enamel accented with polished gold, signed Webb; the ring also of bombé design, applied with rows of green enamel interspersed with rows of round diamonds, size 8, signed Webb. With signed pouch.

US\$ 5,000-7,000

559

PROPERTY FROM A PALM BEACH COLLECTION

Pair of Diamond Earclips and a Clip-Brooch

Of foliate design, set with marquise and pear-shaped diamonds, the earclips accompanied by a frame for wear as a brooch.

US\$ 4,000-6,000



560

PROPERTY FROM A PALM BEACH COLLECTION

Pair of Gold, Emerald and Diamond Pendant-Earclips, David Webb

Set with two pear-shaped cabochon emeralds measuring approximately 17.1 x 10.8 x 7.1 mm and 17.1 x 11.3 x 7.0 mm, within a multi-row surround of textured gold and round diamonds, *signed David Webb*. With signed box.

US\$ 5,000-7,000



561

PROPERTY FROM A PALM BEACH COLLECTION

Star Ruby and Diamond Ring

Set with a cabochon star ruby measuring approximately 14.9 x 11.7 x 11.9 mm, highlighted by round diamonds, *size 4¼*.

US\$ 5,000-7,000



562

PROPERTY FROM A PALM BEACH COLLECTION

Diamond Ring, Oscar Heyman & Brothers

Of ballerina design, the round diamond weighing 5.77 carats, set within a surround of round and baguette diamonds, size 7, with maker's mark for Oscar Heyman & Brothers.

Accompanied by GIA report no. 2191080876 stating that the diamond is L color, SI1 clarity.

US\$ 30,000-50,000



563

PROPERTY FROM A PALM BEACH COLLECTION

Emerald and Diamond Pendant

The carved emerald drop measuring approximately 34.0 x 19.6 x 21.8 mm, accented by numerous round diamonds, surmounted by an old European-cut diamond weighing 2.49 carats.

US\$ 6,000-8,000



564

PROPERTY FROM A PALM BEACH COLLECTION

Cultured Pearl and Diamond Ring

The drop-shaped cultured pearl measuring approximately 12.9 x 15.0 mm, set within a surround of round and baguette-cut diamonds, size 7½.

US\$ 4,000-6,000



565

PROPERTY FROM A PALM BEACH COLLECTION

Cultured Pearl and Diamond Demi-Parure

Comprising: a sautoir composed of 44 baroque cultured pearls measuring approximately 19.9 x 17.6 x 14.2 mm to 13.0 x 13.5 x 10.7 mm, alternating with rondelles set with round diamonds, *may be worn as two necklaces measuring 16½ and 19½ inches*; suspending a matching detachable pendant-brooch; together with a pair of matching earclips; and a ring additionally embellished with two old mine-cut diamonds, *size 7¾*.

US\$ 15,000-20,000



566

PROPERTY FROM A PALM BEACH COLLECTION

Cultured Pearl and Diamond Bracelet

Composed of five strands of baroque cultured pearls measuring approximately 13.5 to 10.0 mm, accented with round diamonds, *length 8½ inches*.

US\$ 10,000-15,000

567

PROPERTY FROM A PALM BEACH COLLECTION

Enamel and Diamond Ring, David Webb

Of geometric design, applied with black enamel and set with round diamonds, size 6½, signed Webb. With signed box.

US\$ 3,000-5,000



568

PROPERTY FROM A PALM BEACH COLLECTION

Gold, Enamel, Diamond and Emerald Clip-Brooch, David Webb

Designed as a leopard, the spots applied with black enamel and accented with bezel-set round diamonds, the eyes set with cabochon emeralds, signed David Webb. With signed pouch.

US\$ 6,000-8,000



569

PROPERTY FROM A PALM BEACH COLLECTION

Gold, Enamel and Diamond Ring, David Webb

Of geometric design, applied with white enamel and set with round diamonds, gross weight approximately 11 dwts, size 5¾, signed Webb. With signed pouch.

US\$ 3,000-5,000



570

PROPERTY FROM A PALM BEACH COLLECTION

**Gold and Diamond Cuff-Bracelet,
David Webb**

Of hinged design, designed as a pair of sparring lions, embellished with pear-shaped diamond eyes, gross weight approximately 130 dwts, *signed Webb*. With signed box and pouch.

US\$ 15,000-20,000



571

PROPERTY FROM A PALM BEACH COLLECTION

**Amethyst and Diamond Ring,
David Webb**

The amethyst cabochon measuring approximately 24.3 x 17.5 mm, set within a hammered gold mounting, accented with round diamonds, gross weight approximately 51 dwts, *size 8, signed David Webb*.

US\$ 5,000-7,000



572

PROPERTY FROM A PALM BEACH COLLECTION

**Enamel, Diamond and Ruby Bracelet,
David Webb**

Designed as a horse with an articulated ring through its mouth, applied with black enamel and set with round diamonds, the eyes set with cabochon rubies, *internal circumference 6 inches, signed Webb*. With signed box.

US\$ 20,000-30,000





573

PROPERTY FROM A PALM BEACH COLLECTION

Pair of Turquoise Earclips, David Webb

Designed as a cluster of turquoise boules topped with gold boules, accented with gold ropework, *signed Webb*. With signed pouch.

US\$ 3,000-5,000



574

FORMERLY IN THE COLLECTION OF MRS. PAUL MELLON

Gold and Diamond Ring, Van Cleef & Arpels

Set with round diamonds framed by the fluted gold mounting, *size 5, signed Van Cleef et Arpels, numbered N.Y. 24895*.

US\$ 4,000-6,000



575

Gold, Coral and Cultured Pearl 'Twist' Bracelet and Ring, Van Cleef & Arpels, France

The bracelet designed as twisting strands of polished gold boules, coral beads and cultured pearls, *length 7½ inches, signed VCA, numbered B4646, with French assay marks and a partial wokshop mark*; the ring of bombé form of similar design, *size 5¾, signed VCA, numbered B2168, with French assay mark; circa 1962*.

Please note this property cannot be shipped internationally due to endangered species materials.

© **US\$ 8,000-12,000**

PROPERTY FROM A PRIVATE COLLECTOR

**Suite of Gold, Cultured Pearl and
Diamond Jewelry, Tiffany & Co.**

Comprising: a necklace of tubogas design centering on links of floral and butterfly motif, set with round diamonds and cultured pearls, *length 16 inches*; a bracelet of similar design, *length 6¼ inches*; a ring designed as a flowerhead similarly-set with round diamonds and cultured pearls, *size 5¾*; and a pair of earclips designed as butterflies similarly-set with round diamonds and cultured pearls; *all pieces signed Tiffany & Co.; circa 1940s.*

PROVENANCE

Formerly in the Collection of Claire Booth Luce.

US\$ 10,000-15,000



577 SOLD WITHOUT RESERVE

PROPERTY OF A WEST COAST COLLECTOR

Gold and Diamond Clip-Brooch, France

Designed as a stylized leaf highlighted with round diamonds, *with French assay and workshop marks; circa 1950.*

US\$ 4,000-6,000





578

Suite of Gold 'Panthere' Jewelry, Cartier, France

Comprising: a flexible gold necklace, a pair of gold earclips and a gold ring, each composed of interlocking gold links, total gross weight approximately 65 dwts, *signed Cartier, the necklace numbered 676029, the earrings numbered C69435, the ring numbered 674900, the necklace and ring with French assay marks, all pieces with workshop marks.* Earclips fitted with posts.

US\$ 8,000-12,000



579

PROPERTY OF A GENTLEMAN, PALM BEACH,
FLORIDA

Diamond Ring

Set with an emerald-cut diamond weighing 5.22 carats on a triple-shank gold band, size 6 $\frac{3}{4}$.

Accompanied by GIA report no. 2195036619 stating that the diamond is J color, VS2 clarity.

US\$ 25,000-35,000



580

Pair of Diamond Pendant-Earclips, Graff

Each surmount designed as stylized openwork leaf set with round diamonds, suspending a detachable pendant accented with round and pear-shaped diamonds, *signed Graff.* With signed box.

US\$ 10,000-15,000

581

Ruby and Diamond Necklace and Pair of Earclips, Gucci

The necklace set with a pear-shaped ruby, accented by numerous marquise-shaped, round and baguette diamonds, the chain further spaced and accented by round and marquise-shaped rubies, *length 25 inches, detaches for wear as a bracelet, length 7¼ inches*; together with earclips of similar design, the pendants anchored by two pear-shaped rubies, the tops set with round rubies and round diamonds, *all pieces signed Gucci Galleria, the necklace signed Made in Italy*. With signed box.

US\$ 20,000-30,000



582

PROPERTY OF A LADY

Suite of Ruby and Diamond Jewels

Comprising: a bracelet of geometric design set with oval-shaped rubies between lines of calibré-cut rubies, highlighted by round diamonds, *length 6⅞ inches*; a ring of similar design, *size 4½*; and a pair of hoop-shaped earclips pavé-set with round diamonds, accented by bands of calibré-cut rubies. Fitted with retractable posts.

US\$ 10,000-15,000





583

PROPERTY OF A GENTLEMAN, PALM BEACH,
FLORIDA

Emerald and Diamond Ring

Set with a square-cut emerald weighing approximately 2.10 carats, flanked by baguette diamonds, size 6¾.

Accompanied by AGL report no. 1089986 stating that the emerald is of Colombian origin, clarity enhancement: minor, type: modern.

US\$ 5,000-7,000



584

Pair of Diamond Earrings

Each set with a square emerald-cut diamond weighing 1.32 and 1.29 carats.

Accompanied by GIA report no. 7206046567 stating that the diamond weighing 1.32 carats is F color, VS2 clarity.

Accompanied by GIA report no. 6191730998 stating that the diamond weighing 1.29 carats is D color, VS1 clarity.

US\$ 8,000-10,000



585

Pair of Yellow Sapphire and Diamond Earrings

Supporting two cushion-cut yellow sapphire each weighing approximately 4.25 carats, suspended from a line of round and baguette diamond surmount.

US\$ 8,000-12,000

586

Diamond Clip-Brooch

Of abstract foliate and ribbon design, centered on an old European-cut diamond weighing 2.59 carats, accented by marquise, pear-shaped, round and baguette diamonds, *numbered 1050*.

US\$ 18,000-20,000



587

PROPERTY OF A LADY, SAN FRANCISCO, CA

Diamond Ring

Set with a marquise-shaped diamond weighing 2.58 carats, flanked by two tapered baguette diamonds, *size 4½*.

Accompanied by GIA report no. 6183895536 stating that the diamond is D color, VS1 clarity.

US\$ 15,000-20,000



588

PROPERTY FROM AN IMPORTANT PRIVATE COLLECTION

Diamond Bracelet

The stylized floral design composed of round, pear, marquise and baguette diamonds, *length 6½ inches*.

US\$ 12,000-15,000





589

PROPERTY OF A GENTLEMAN, PALM BEACH,
FLORIDA

Diamond Rivière Necklace

Composed of a line of graduated round
diamonds, *length 15½ inches.*

US\$ 25,000-35,000



△ 590

Emerald, Sapphire and Diamond Bracelet and Clip-Brooch, France

The bracelet composed of floral links, set with
emerald cabochons and round sapphires,
further set with round diamonds, *length 7 inches*;
together with a brooch of similar design, set with
emerald cabochons, accented by oval-shaped
sapphires, further set with round diamonds, *with
French assay marks; circa 1960s.*

Brooches of similar design are illustrated in:

Bulgari: *125 Years of Italian Magnificence, Grand
Palais*, by Amanda Triossi, pages 124-125.

Bulgari, by Daniela Mascetti and Amanda Triossi,
pages 94-95.

*A brooch and earclip set of similar design were
sold as part of the Estate of Brooke Astor by
Sotheby's New York, September 2012, lot 879.*

US\$ 15,000-20,000

591

Diamond Bracelet

Of geometric design, set with old European, single-cut and baguette diamonds, *length 7 inches; circa 1925.*

US\$ 6,000-8,000



592

Emerald, Diamond and Sapphire Ring,

Centering an emerald-cut emerald weighing approximately 4.30 carats framed by rose-cut diamonds and calibr -cut sapphires, the shank further embellished with rose-cut diamonds, *size 5½.*

Accompanied by AGL report no. 1081343 stating that the emerald is of Colombian origin, clarity enhancement: insignificant to minor, type: traditional.

US\$ 10,000-15,000



593

PROPERTY OF A PRIVATE COLLECTOR

Diamond Ring

Set with three emerald-cut diamonds, *size 6.*

Accompanied by GIA report no. 7226123, dated January 9, 1992, stating that the diamond weighing 1.40 carats is G color, VS2 clarity.

US\$ 10,000-15,000





THIS PAGE
LOTS 512 & 726





594

Diamond Pendant-Necklace

Suspending a square emerald-cut diamond weighing 3.68 carats, length 14¾ inches.

Accompanied by GIA report no. 5172640773 stating that the diamond is D color, SI1 clarity, with Excellent Polish and Symmetry.

US\$ 35,000-45,000



595

PROPERTY OF A PRIVATE COLLECTOR, TEXAS

Gold 'Atlas' Cuff-Bracelet, Tiffany & Co.

Designed as a series of Roman numerals, internal circumference 6½ inches, signed Tiffany & Co. With signed box.

US\$ 4,000-6,000



596

Gold and Diamond 'Tortue' Wristwatch, Cartier

The tonneau-shaped silvered guilloché dial set with Roman numeral indicators and blue-steel hands, the case set with round diamonds, the crown set with a reverse-set diamond, to the polished gold link bracelet, gross weight approximately 84 dwts, mechanical movement, internal circumference 6½ inches; caseback, dial and movement all signed Cartier; numbered 390312MG 2496; with maker's mark and Swiss assay and hallmarks. With signed pouch.

US\$ 10,000-15,000

597

PROPERTY OF A PRIVATE COLLECTOR, TEXAS

Two Diamond 'Diamonds by the Yard' Longchains, Elsa Peretti for Tiffany & Co.

One necklace composed of gold finelink chain, set at regular intervals with bezel-set round diamonds, *length 28 inches, signed Peretti and Tiffany & Co.*; the other necklace composed of platinum finelink chain, set at irregular intervals with bezel-set round diamond, *length 36 inches, signed Peretti and T & Co.* With signed boxes.

US\$ 8,000-12,000



598

Group of Tri-Color Gold and Diamond Bangle-Bracelets

Comprising six bangle-bracelets of undulating design: two yellow gold, two white gold, and two pink gold set at intervals with bezel-set diamonds, *internal circumference 8 inches, signed Assil NY.*

US\$ 12,000-15,000





599

PROPERTY FROM A FLORIDA COLLECTION

Emerald and Diamond Ring, Ruser

Set with a cabochon emerald weighing approximately 12.50 carats, framed by marquise-shaped diamonds, the shoulders highlighted by round diamonds, size 4¼.

Accompanied by AGL report 1085064 stating that the emerald is of Colombian origin, clarity enhancement: minor, type: modern.

US\$ 10,000-15,000



600

PROPERTY OF A LADY

Diamond Ring

Set with a round diamond weighing 3.43 carats, flanked by tapered baguette diamonds, size 6.

Accompanied by GIA report no. 2195130336 stating that the diamond is D color, VS2 clarity.

US\$ 30,000-40,000



601

Pair of Fancy Vivid Yellow Diamond and Diamond Earclips

Designed as flowerheads, each centering on a cut-cornered rectangular modified brilliant-cut Fancy Vivid Yellow diamond weighing 1.69 and 1.60 carats within a double surround of round diamonds. Fitted with posts.

Accompanied by two GIA reports:

No. 14585296, dated September 8, 2005, stating that the diamond weighing 1.69 carats is Fancy Vivid Yellow, Natural Color, VS2 clarity.

No. 14468512, dated July 13, 2005, stating that the diamond weighing 1.60 carats is Fancy Vivid Yellow, Natural Color, VS2 clarity.

US\$ 35,000-45,000

602

PROPERTY OF A LADY, CHICAGO, ILLINOIS

Pair of Diamond Pendant-Earrings

Designed as marquise-shaped pendants set with round and marquise-shaped diamonds.

US\$ 7,500-10,000



603

Sapphire and Diamond Ring

Set with a cushion-cut sapphire weighing 7.67 carats, flanked by two triangular-cut diamonds, size 5¾.

Accompanied by AGL report no. 1088057 stating the sapphire is of Ceylon origin with no indications of heating.

US\$ 25,000-35,000



604

PROPERTY FROM A PRIVATE COLLECTION

Pair of Diamond Earclips, Tiffany & Co.

Designed as floral clusters, set with round and marquise-shaped diamonds, *signed Tiffany & Co.* With signed box.

US\$ 5,000-7,000





605

PROPERTY OF A LADY

**Multi-Colored Sapphire Longchain and
a Pair of Multi-Colored Sapphire and
Diamond Earclips**

The longchain composed of a line of variously-shaped bezel-set rose-cut pink, purple, blue, green, yellow and near colorless sapphires, length 71 inches, numbered 31214; together with a pair of earclips designed as clusters of rose-cut pink and purple sapphires and round diamonds, suspending a row of round diamonds and similarly cut and colored sapphires from fine link chains, with Italian assay and registry marks. Fitted with retractable posts.

US\$ 30,000-50,000



606

PROPERTY OF A LADY

**Pair of Gold and Diamond Earclips,
Seaman Schepps**

Designed as flowerheads set with round diamonds, signed Seaman Schepps.

US\$ 7,000-9,000

607

Suite of Pink Tourmaline and Diamond 'Moonbeam' Jewels, Fred Leighton

Comprising a pair of earclips and a clip-brooch of ribbon design, set with variously-shaped pink tourmalines, accented by rose-cut diamonds, *clip-brooch signed Moonbeam by F.L.*

US\$ 15,000-20,000



608

PROPERTY OF A LADY

Diamond Wristwatch, Vacheron Constantin

The rectangular dial set with square-cut and baguette diamonds, quartz movement, the buckle highlighted with round diamonds, *signed Vacheron Constantin, Geneve, caseback numbered 672241, with Swiss assay and maker's marks.*

US\$ 12,000-15,000



609

PROPERTY FROM A PRIVATE COLLECTION

Diamond Ring

Set with an emerald-cut diamond weighing 5.56 carats, size 6¼, *illustrated unmounted.*

Accompanied by GIA report no. 5191119234 stating that the diamond is K color, VVS2 clarity. Together with the original working diagram stating that the diamond may be potentially Internally Flawless.



US\$ 20,000-30,000

PROPERTY FROM THE JACK AND EILEEN FEATHER COLLECTION

LOTS 610–617



Mrs. Eileen Feather wearing lot 613

Jack and Eileen Feather met and fell in love as teenagers in their home town of Omaha, Nebraska. When they married, days after Jack's 19th birthday, Eileen was working as a bank clerk and Jack was pursuing a degree in English on his way to becoming a teacher. Soon after the birth of their first child, Jack and Eileen moved to California so that Jack could continue his education at UC Berkeley. Shortly thereafter Jack was diagnosed with polio, leaving him bedridden for months. Jack's recovery efforts kindled an interest in physical fitness and led to his innovating new exercises to help regain strength. Eileen began exercising with Jack, acting as his tireless workout partner, motivator, and collaborator; their pioneering exercises helped him make a full recovery and left him feeling stronger than ever.

In an effort to allow them to share their knowledge and help people, Jack and Eileen decided to start a business together, and the Eileen Feather Figure Salon was created. Soon, through their talent and determination, the salon grew to become an extremely successful franchise and Eileen herself became an icon of health, beauty and self-made success. When it came to Jack and Eileen enjoying the privileges of their success, they always thought of each other. None of the jewelry in their collection was purchased for themselves, but rather a gift from one to the other. Every piece of jewelry was a token of gratitude bestowed in honor of their lifelong partnership.

— John Feather, son of Jack and Eileen Feather

610

PROPERTY FROM THE JACK AND EILEEN FEATHER
COLLECTION

Ruby and Diamond Necklace and Earclips

The necklace of braided design set with oval-shaped rubies and baguette diamond, gathered at the front by a fringe of oval-shaped rubies, *internal circumference 15 inches*; the earclips surmounted by a cluster of oval-shaped rubies suspending a fringe of baguette diamonds.

US\$ 30,000-50,000



611

PROPERTY FROM THE JACK AND EILEEN FEATHER
COLLECTION

Gem-Set and Diamond Wristwatch, Hammerman Brothers & Garrard

Featuring a small circular gold tone dial, the bezel set with round diamonds, completed by a bracelet of round emeralds, sapphires and rubies, quartz movement, *length 6¾ inches, the dial signed Garrard, the bracelet with maker's mark for Hammerman Brothers, with Swiss hallmarks.*

US\$ 10,000-15,000



612

PROPERTY FROM THE JACK AND EILEEN FEATHER
COLLECTION

Ruby and Diamond Ring

Centering an oval-shaped ruby weighing 6.77 carats, surrounded by round diamonds, size 5¼.

Accompanied by AGL report no. 1089984 stating that the ruby is of Thai origin, with no indications of heating.

US\$ 20,000-30,000



PROPERTY FROM THE JACK AND EILEEN FEATHER
COLLECTION

**Sapphire and Diamond Ring, Cartier,
Paris**

Set with a cushion-cut sapphire weighing 52.89 carats, the mounting highlighted with round and marquise-shaped diamonds, size 6¼, signed *Cartier Paris*, numbered 010634, with French assay and workshop marks. With signed box.

Accompanied by AGL report no. 1089983 stating that the sapphire is of Classic Ceylon origin, with no indications of heating.

US\$ 125,000-150,000



(SIDE VIEW)

614

PROPERTY FROM THE JACK AND EILEEN FEATHER
COLLECTION

Pair of Diamond Earclips

Designed as lanterns with articulated segments,
set with numerous round diamonds; *circa 1930s*.

US\$ 12,000-15,000



615

PROPERTY FROM THE JACK AND EILEEN FEATHER
COLLECTION

Sapphire and Diamond Ring, Oscar Heyman & Brothers

Of cluster design, featuring marquise-shaped
sapphires, accented by round diamonds, *size 5½*,
with maker's mark for Oscar Heyman & Brothers,
numbered 93305.

US\$ 3,000-5,000



616

PROPERTY FROM THE JACK AND EILEEN FEATHER
COLLECTION

Platinum, Diamond and Sapphire Ring

Of bombé design, centering a round diamond
weighing 4.01 carats, accented with two baguette
sapphires, *size 11*.

Accompanied by GIA report no. 2195053568
stating that the diamond is K Color, Faint Brown,
S11 clarity.

US\$ 15,000-20,000



PROPERTY FROM THE JACK AND EILEEN FEATHER
COLLECTION

Diamond, Ruby and Sapphire Ring

Centering a round diamond weighing 7.16 carats, within a surround of round and square-cut diamonds and round rubies and sapphires, on a band composed of three stacked shanks, size $5\frac{1}{4}$, central shank signed V.C&A.

Accompanied by GIA report no. 2195036646 stating that the diamond is H color, VS2 clarity.

US\$ 100,000-125,000

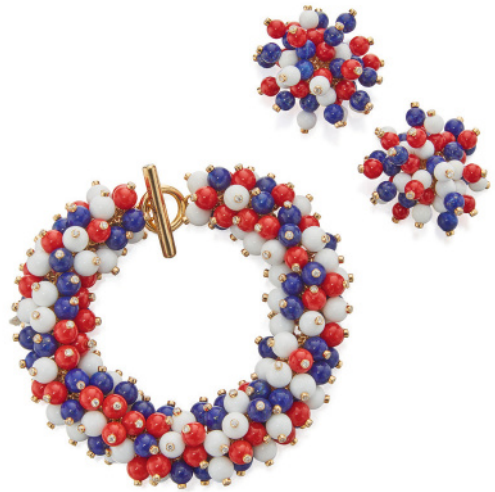


618

Suite of Lapis Lazuli, Agate and Diamond Jewelry, Aletto Brothers

Comprising a bracelet, ring and pair of earclips, set with articulated lapis lazuli, red and white agate beads, highlighted by round diamonds, *bracelet length approximately 7¾ inches, signed Aletto Bros, the bracelet numbered 028, the ring numbered 043 and earclips numbered 001. With three signed pouches and signed box depicting the American flag.*

US\$ 15,000-20,000



619

PROPERTY OF A PRIVATE COLLECTOR

Pair of Diamond Earrings, Graff

The hoops set with round diamonds, *signed Graff, numbered 12464.*

US\$ 20,000-30,000



620

Sapphire and Diamond Ring

Set with an emerald-cut sapphire weighing approximately 10.84 carats, flanked by two half-moon-shaped diamonds, *size 6½.*

US\$ 15,000-20,000



End of Session One





SESSION TWO

NEW YORK
THURSDAY
19 APRIL 2018
2 PM

LOTS 621-763

Please note these lots are
not shown in actual size



621

PROPERTY OF A DISTINGUISHED LADY

Crystal and Diamond Necklace, Elsa Peretti for Tiffany & Co.

Suspending a bean-shaped crystal pendant, within a fine-link cage, accented by round diamonds, *length approximately 23³/₄ inches, signed Tiffany & Co., Peretti.* With signed box and pouch.

US\$ 1,500-2,500



622

PROPERTY OF A DISTINGUISHED LADY

Pair of Two-Color Gold and Diamond Cuff-Bracelets, Buccellati

Each of hinged design, the brushed white gold cuffs accented with yellow gold floral motifs set with round diamonds, *internal circumference 6 inches, both signed Buccellati, numbered L5212 and L3942, with Italian assay and registry marks.*

US\$ 10,000-15,000

623

PROPERTY OF A DISTINGUISHED LADY

Gold, Diamond, Emerald and Ruby Cuff-Bracelet, Buccellati

Of hinged design, the brushed gold cuff-bracelet accented with openwork floral motifs set with round diamonds, emeralds and rubies, *internal circumference 7 inches, signed Gianmaria Buccellati, numbered D3050, with Italian assay and registry marks.*

US\$ 25,000-35,000



624

PROPERTY OF A DISTINGUISHED LADY

Pair of Diamond Earrings

The hoop earrings set with numerous round diamonds.

US\$ 5,000-7,000



625

PROPERTY OF A DISTINGUISHED LADY

Three Gold, Diamond and Ruby 'Atlas' Bangle-Bracelets, Tiffany & Co.

Comprising three bangle-bracelets: one of hinged design accented with polished gold Roman numerals; another of similar design further highlighted with round diamonds; another of similar design further highlighted with calibré-cut rubies; total gross weight approximately 113 dwts, *internal circumference 6½ inches, all signed Tiffany & Co, with Italian assay marks; circa 1995.* With three signed pouches.

US\$ 12,000-15,000





626

PROPERTY OF A DISTINGUISHED LADY

**Pink Gold, Ceramic and Diamond
'Serpenti Spiga' Wristwatch, Bulgari**

Of *serpenti* design, the gold case framed by round diamonds, the black dial applied with Roman numerals and baton indicators, the crown accented by a rubellite cabochon, completed by a coiled tubogas bracelet highlighted by round diamonds, gross weight approximately 93 dwts, quartz movement, *internal circumference 6½ inches, expandable, the dial and caseback signed Bulgari, the caseback numbered SPP35G and PO2196, with Swiss hallmarks. With two signed pouches.*

US\$ 20,000-30,000



627

PROPERTY OF A DISTINGUISHED LADY

Gold and Ancient Coin Necklace, Bulgari

The curb link chain set at intervals with eight ancient bronze coins, all with inscriptions on the reverse stating 'Constantius II, 323-351 A.D., Maiorina, Roman Empire,' gross weight approximately 160 dwts, *length approximately 34 inches, signed Bulgari Italy, numbered B142. With signed pouch.*

US\$ 20,000-30,000

628

PROPERTY OF A DISTINGUISHED LADY

Gold and Gem-Set Necklace, Bulgari

The gold chain accented with polished lapis lazuli, coral, sugilite, rhodochrosite and agate rondelles, gross weight approximately 40 dwts, length 34 inches, signed Bulgari. With signed pouch.

Please note this property cannot be shipped internationally due to endangered species materials.

• **US\$ 6,000-8,000**



629

PROPERTY FROM THE COLLECTION OF JOAN OESTREICH KEND

Gold 'Parentesi' Bracelet and Wristwatch, and a 'Doppio Cuore' Ring, Bulgari

The bracelet decorated with polished gold links, gross weight approximately 63 dwts, internal circumference 6½ inches, expandable, signed Bulgari, numbered T31, stamped with Italian assay and registry marks; the wristwatch of similar design, with a round black dial, gross weight approximately 61 dwts, quartz movement, internal circumference 5½ inches, expandable, the caseback signed Bulgari and numbered BJ 01 and G 63918, the watch bracelet signed Bulgari, stamped with maker's mark and Italian assay and registry marks; the ring with an interlocking heart-shaped cutout, gross weight approximately 10 dwts, size 6½, signed Bulgari, stamped with Italian assay and registry marks.

US\$ 6,000-8,000



630

Ruby and Diamond Ring

Set with an oval-shaped ruby weighing 1.79 carats flanked by tapered baguette diamonds, size 6.

Accompanied by AGL report no. 1081207 stating that the ruby is of Mozambique origin, with no indications of heating.

US\$ 4,000-6,000





631

PROPERTY OF A DISTINGUISHED LADY

Pair of Aquamarine and Diamond Earrings, Tiffany & Co.

The chandelier-style earrings, supporting six pear-shaped aquamarines, accented by round and rose-cut diamonds, *signed Tiffany & Co.*

US\$ 8,000-12,000



632

PROPERTY OF A DISTINGUISHED LADY

Opal and Diamond Pendant

The oval-shaped opal framed by old European-cut diamonds, suspended from a bail embellished with round diamonds.

US\$ 10,000-15,000



633

PROPERTY OF A DISTINGUISHED LADY

Pair of Coral and Diamond Earclips

Each suspending a drop-shaped coral, the surmounts of scroll motif, accented by single-cut diamonds. Fitted with posts.

Please note this property cannot be shipped internationally due to endangered species materials.

• **US\$ 5,000-7,000**

634

PROPERTY OF A DISTINGUISHED LADY

Pair of Alexandrite and Diamond Earrings, Tiffany & Co.

The earring drops suspending round alexandrites weighing 1.40 and 1.19 carats within a multi-row surround of round diamonds, *signed T&Co.* With signed box.

Accompanied by AGL report no. 1089978 A and B stating that the alexandrites are of Brazilian origin, with no indications of clarity enhancement, degree of color change: prominent, quality of color change: excellent.

US\$ 8,000-12,000



635

PROPERTY OF A DISTINGUISHED LADY

Three Diamond and Colored Stone Band Rings, Tiffany & Co.

Designed as three eternity bands, one set with round diamonds; one set with alternating round diamonds and round rubies; one set with alternating round diamonds and round sapphires; *all size 5½, all signed Tiffany & Co.* With three signed pouches.

US\$ 3,000-5,000





636

PROPERTY OF A LADY

Pink Tourmaline, Tanzanite and Diamond 'Fireworks' Pendant-Brooch, Tiffany & Co.

Set with an oval-shaped pink tourmaline measuring approximately 19.0 x 15.2 x 9.0 mm, with radiating lines of oval-shaped tanzanites and round diamonds, *signed Tiffany & Co.*

US\$ 12,000-15,000



637

Pair of Diamond Earrings

Designed as hoops set with round diamonds, *signed Assil NY.*

US\$ 15,000-20,000



△ 638

Chalcedony and Iolite Ring, Taffin

Bezel-set with a light blue chalcedony cabochon, embellished with iolite cabochons, size 6¼, *signed Taffin, numbered TF491.*

US\$ 5,000-7,000

639

PROPERTY OF A PRIVATE COLLECTOR

Sapphire and Diamond Ring

Centering an cushion-cut sapphire weighing 8.38 carats, framed by marquise-shaped diamonds, size 6.

Accompanied by AGL report no. 1090244 stating that the sapphire is of Ceylon origin, with indications of heating.

US\$ 18,000-22,000



640

Pair of Sapphire and Diamond Earclips

Designed as a row of graduated discs set with round diamonds and round pink and blue sapphires. Fitted with posts.

US\$ 4,000-6,000



641

Pair of Pink Sapphire and Diamond Earrings

Set with two round pink sapphires each weighing approximately 2.00 carats, framed and accented by round diamonds.

US\$ 10,000-15,000





□ 642 SOLD WITHOUT RESERVE

Pair of Yellow Beryl, Pink Tourmaline and Diamond Earclips, Bulgari

Suspending two asscher-cut yellow beryls, topped by emerald-cut pink tourmalines, accented by baguette diamonds, *signed Bulgari*.

US\$ 15,000-20,000



643

Diamond Bracelet

Designed as a bow, set with numerous round and baguette diamonds, *internal circumference 6 inches*.

US\$ 20,000-30,000



644

Diamond Band Ring

Designed as an eternity band, set with 18 emerald-cut diamonds, *size 5½*.

US\$ 22,000-28,000

645

PROPERTY OF A LADY

Cultured Pearl and Diamond Sautoir, Mikimoto

Composed of cultured pearls measuring approximately 8.9 to 7.9 mm, completed by a decorative ball clasp set with round diamonds, length 68½ inches, with French assay mark, Italian registry marks, and maker's marks for Mikimoto.

US\$ 10,000-15,000



646

Pair of Diamond Studs

Each set with a princess-cut diamond weighing 2.03 and 2.01 carats.

Accompanied by photocopies of two GIA reports:

No. 10569014 dated February 8, 1999 stating that the diamond weighing 2.03 carats is H color, VS2 clarity.

No. 10486639 dated November 12, 1998 stating that the diamond weighing 2.01 carats is I color, VS2 clarity.

US\$ 12,000-15,000





647

Diamond Cover-Watch, Piaget, retailed by Mauboussin, Paris

Designed as a double row of round and baguette diamonds, centered on two clusters of round and marquise-shaped diamonds, one cluster opening to reveal a round dial with baton indicators, mechanical movement, *dial signed Piaget*, *caseback signed Mauboussin Paris*, with French assay marks. With signed Mauboussin box.

US\$ 10,000-15,000



648

PROPERTY FROM A FAMILY COLLECTION

Sapphire and Diamond Ring

Centering a cushion-cut sapphire weighing 9.92 carats, framed by round diamonds, size 8 $\frac{1}{4}$.

Accompanied by AGL report no. 1088770 stating that the sapphire is of Ceylon origin, with no indications of heating.

US\$ 10,000-15,000



649

Ruby Bracelet

Composed of a line 32 French-cut rubies, length 7 $\frac{1}{8}$ inch.

Accompanied by AGL report no. CS 1078038 -D stating that the 32 rubies tested at random are of Burmese origin, with indications of heating.

PROVENANCE

Formerly in the Lichtblau Collection, Sotheby's Fine Jewels, December 9, 2016, lot 728.

US\$ 7,000-9,000

650

PROPERTY FROM A NEW YORK ESTATE

Pair of Ruby and Diamond Clips

The shield-shaped clips with baguette and old European-cut diamonds, accented by round and oval-shaped rubies.

US\$ 15,000-20,000



651

Diamond Bracelet

Of geometric openwork design, each link centering an old European-cut diamond accented by single-cut diamonds, *length 7½ inches; circa 1930.*

US\$ 6,000-8,000



652

Pair of Diamond Brooches

Of foliate design, each set with a line of round diamonds, accented by pear-shaped diamonds and baguette diamond stems, the larger brooch embellished with a ribbon motif composed of baguette, round and marquise-shaped diamonds.

US\$ 10,000-15,000





653

Natural Pearl and Diamond Pendant-Necklace

Suspending a drop-shaped natural light gray pearl measuring approximately 17.6 x 9.8 mm, capped with rose-cut diamonds, the fine link chain accented by old European and single-cut diamonds, *length 17 inches; circa 1905.*

Accompanied by GIA report no. 5181661856 stating that the pearl is natural, saltwater, with no indications of treatment.

US\$ 18,000-22,000



654

PROPERTY FROM A FAMILY COLLECTION

Diamond and Synthetic Sapphire Ring

Centering an old European-cut diamond weighing 7.41 carats within an openwork setting accented with round diamonds and calibré-cut synthetic sapphires, *size 6½, some smaller diamonds and synthetic sapphires missing; circa 1920.*

Accompanied by GIA report no. 2195119551 stating that the diamond is O-P Range color, VS2 clarity.

US\$ 20,000-30,000



655

PROPERTY OF A PRIVATE COLLECTOR, CALIFORNIA

Emerald and Diamond Ring

Centering an emerald-cut emerald weighing 5.51 carats, flanked by shield-shaped and single-cut diamonds, *size 5.*

Accompanied by AGL report. no. 1083315 stating that the emerald is of Colombian origin, clarity enhancement: minor, type: traditional.

US\$ 10,000-15,000

656

Diamond, Emerald and Pearl Pendant-Necklace

Of girandole design, the pendant set with variously-shaped antique-cut diamonds, cabochon and calibr -cut emeralds, and pearls, length 15½ inches.

Please note that the pearls have not been tested for natural origin.

US\$ 7,000-9,000



657

Gem-Set, Synthetic Ruby, and Diamond Charm Bracelet

The platinum chain links suspending fourteen charms set with diamonds, natural and synthetic rubies, emeralds and sapphires depicting a chick, heart, terrier, cocktail, clover, wishbone, home, horseshoe, key, star, heel, candle, rings and buoy, length 7¼ inches; circa 1930.

US\$ 15,000-20,000



658

PROPERTY FROM A FLORIDA ESTATE

Ruby and Diamond Ring

The cushion-cut ruby weighing approximately 2.40 carats, set within a decorative frame highlighted by old European, single and rose-cut diamonds, size 3½; circa 1930.

Accompanied by AGL report no. 1087156 stating that the ruby is of Thai origin, with indications of heating.

US\$ 10,000-15,000





659

PROPERTY FROM A FLORIDA ESTATE

Natural Pearl and Diamond Brooch

Suspending a baroque-shaped natural pearl measuring approximately 25.0 x 12.8 mm, the bow-shaped top set with old mine and rose-cut diamonds.

Accompanied by GIA report no. 5181732597 stating that the pearl is natural, saltwater, with no indications of treatment.

US\$ 5,000-7,000



660

PROPERTY FROM A NEW YORK ESTATE

Cultured Pearl, Ruby and Diamond Bracelet

The three-strand bracelet composed of 50 cultured pearls measuring approximately 10.4 to 10.0 mm, the detachable pendant-clasp featuring a cushion-cut ruby weighing 4.61 carats, circled by old mine-cut diamonds, length 8¼ inches.

Accompanied by AGL report no. 1087155 stating that the ruby is of Burmese origin, with no indications of heating.

US\$ 15,000-20,000



661

Diamond Brooch

Of geometric design, set with variously-shaped antique-cut diamonds.

US\$ 4,000-6,000

662

PROPERTY FROM A PRIVATE COLLECTION

Diamond Necklace

Suspending a fringe of old European-cut diamonds, embellished with single-cut diamonds, *length approximately 14¾ inches.*

US\$ 15,000-20,000



663

PROPERTY FROM A NEW YORK ESTATE

Sapphire and Diamond Bracelet

Composed of nine oval and cushion-cut bezel-set sapphires interspersed with similarly-set old European-cut diamonds, *length 7 inches, with French assay and maker's mark; circa 1900.*

US\$ 8,000-12,000





664

PROPERTY FROM A DISTINGUISHED ESTATE SOLD
TO BENEFIT A CHARITABLE FOUNDATION

Diamond and Emerald Lariat

Composed of a line of rose-cut pear-shaped diamonds accented by emerald beads, terminating on two tassels of similarly-cut diamonds and emeralds, finished with briolette diamonds, capped by pavé-set round diamonds, *length 60 inches.*

US\$ 25,000-35,000



665

PROPERTY FROM A DISTINGUISHED ESTATE SOLD
TO BENEFIT A CHARITABLE FOUNDATION

Emerald and Diamond Pendant-Ring

Set with a cabochon emerald weighing 58.22 carats within a surround of baguette diamonds, the mounting further highlighted with round and baguette diamonds, *size 6½, convertible to a pendant for variety of wear.*

Accompanied by a gemological report.

US\$ 20,000-30,000



666

PROPERTY FROM A DISTINGUISHED ESTATE SOLD
TO BENEFIT A CHARITABLE FOUNDATION

Pair of Diamond Earrings, Kwiat

Of hoop design, set with alternating round and emerald-cut diamonds, *signed Kwiat, numbered 98516, with maker's mark.*

US\$ 3,500-4,500

667

PROPERTY FROM A DISTINGUISHED ESTATE SOLD
TO BENEFIT A CHARITABLE FOUNDATION

Cultured Pearl and Diamond Necklace

Composed of 23 cultured pearls measuring
from approximately 19.1 to 15.3 mm, the clasp
accented with numerous pavé-set round
diamonds, *length 17½ inches.*

US\$ 10,000-15,000



668

PROPERTY FROM A DISTINGUISHED ESTATE SOLD
TO BENEFIT A CHARITABLE FOUNDATION

Pair of Ruby and Diamond Earrings

Suspending two pear-shaped drop rubies
together weighing 34.26 carats, capped by round
diamonds, accented with numerous briolette
diamonds, *signed JRD.*

US\$ 8,000-12,000





669

PROPERTY FROM A DISTINGUISHED ESTATE SOLD
TO BENEFIT A CHARITABLE FOUNDATION

Pair of Diamond Pendant-Earclips

The circular tops set with round and baguette diamonds, suspending detachable pendants set with round diamonds.

US\$ 20,000-30,000



670

PROPERTY FROM A DISTINGUISHED ESTATE SOLD
TO BENEFIT A CHARITABLE FOUNDATION

Sapphire and Diamond Ring

Set with an oval-shaped sapphire weighing 26.65 carats surrounded by round and pear-shaped diamonds, size 6¾.

Accompanied by a gemological report.

US\$ 25,000-35,000



671

PROPERTY FROM A DISTINGUISHED ESTATE SOLD
TO BENEFIT A CHARITABLE FOUNDATION

Pair of Sapphire and Diamond Earrings

The tops set with round, marquise and pear-shaped diamonds suspending oval-shaped sapphires together weighing approximately 8.50 carats.

US\$ 8,000-12,000

672

PROPERTY FROM A DISTINGUISHED ESTATE SOLD
TO BENEFIT A CHARITABLE FOUNDATION

Ruby and Diamond Ring, Oscar Heyman & Brothers

Centering a cushion-cut ruby weighing 6.14
carats, surrounded by eight oval-shaped
diamonds, *with maker's mark for Oscar Heyman
& Brothers, numbered 99997.*

Accompanied by a gemological report.

US\$ 25,000-35,000



673

PROPERTY FROM A DISTINGUISHED ESTATE SOLD
TO BENEFIT A CHARITABLE FOUNDATION

Diamond Earclips

Designed as oval-shaped hoops set with
numerous round diamonds. Fitted with posts.

US\$ 4,000-6,000



674

PROPERTY FROM A DISTINGUISHED ESTATE SOLD
TO BENEFIT A CHARITABLE FOUNDATION

Sapphire and Diamond Bracelet

Designed as a line, set with round diamonds
and highlighted with graduated oval-shaped
sapphires, *length 7 inches.*

US\$ 10,000-15,000





675

PROPERTY FROM A DISTINGUISHED ESTATE SOLD
TO BENEFIT A CHARITABLE FOUNDATION

Pair of Diamond Pendant-Earclips

The surmounts designed as clusters of round and oval-shaped diamonds suspending pendants composed of round and pear-shaped diamonds. Fitted with posts.

US\$ 8,000-12,000



676

PROPERTY FROM A DISTINGUISHED ESTATE SOLD
TO BENEFIT A CHARITABLE FOUNDATION

Diamond, Conch Pearl and Enamel Brooch

Designed as a dog's head, set with old-European and single-cut diamonds, the eyes and nose applied with enamel, the tongue set *en tremblant* with a conch pearl.

Please note that the conch pearl has not been tested for natural origin.

Please note this property cannot be shipped internationally due to endangered species materials.

• **US\$ 3,000-5,000**



677

PROPERTY FROM A DISTINGUISHED ESTATE SOLD
TO BENEFIT A CHARITABLE FOUNDATION

Yellow-Orange Sapphire and Diamond Ring

Centering an octagonal-shaped yellow-orange sapphire weighing 30.71 carats, surrounded by numerous single-cut diamonds of floral design, size 6.

Accompanied by a gemological report.

US\$ 7,500-10,000

678

PROPERTY FROM A DISTINGUISHED ESTATE SOLD
TO BENEFIT A CHARITABLE FOUNDATION

Diamond Necklace

Composed of a line of graduated round
diamonds, *length 16¼ inches.*

US\$ 15,000-20,000



679

PROPERTY FROM A DISTINGUISHED ESTATE SOLD
TO BENEFIT A CHARITABLE FOUNDATION

Diamond Wristwatch, Piaget

The circular dial, bezel and bracelet set
throughout with round diamonds, mechanical
movement, *the dial and caseback signed Piaget,*
the caseback numbered 4286 C 626 667030, with
Swiss hallmarks.

US\$ 15,000-20,000



680

PROPERTY FROM A DISTINGUISHED ESTATE SOLD
TO BENEFIT A CHARITABLE FOUNDATION

Pair of Aquamarine and Diamond Pendant-Earrings

The kite-shaped tops suspending a line of round
diamonds, anchored by oval-shaped aquamarines
weighing approximately 20.95 and 21.10 carats.

US\$ 8,000-12,000





681

PROPERTY FROM A DISTINGUISHED ESTATE SOLD
TO BENEFIT A CHARITABLE FOUNDATION

Sapphire and Diamond Ring

Centering an octagonal mixed-cut sapphire weighing 32.18 carats, surrounded by numerous diamonds, size 5¾.

Accompanied by a gemological report.

US\$ 15,000-20,000



682

PROPERTY FROM A DISTINGUISHED ESTATE SOLD
TO BENEFIT A CHARITABLE FOUNDATION

Diamond Bracelet

Designed as a line, set with numerous round diamonds, length 6½ inches.

US\$ 6,000-8,000



683

PROPERTY FROM A DISTINGUISHED ESTATE SOLD
TO BENEFIT A CHARITABLE FOUNDATION

Ruby and Diamond Ring, Oscar Heyman & Brothers

Set with a cushion-cut ruby weighing 6.12 carats and accented by marquise-shaped diamonds, with maker's mark for Oscar Heyman & Brothers, numbered 37352.

Accompanied by a gemological report.

US\$ 15,000-20,000

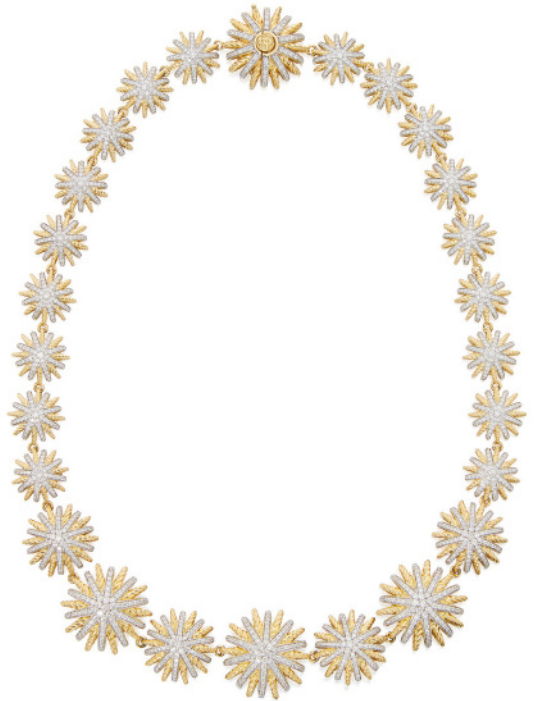
684

PROPERTY FROM A DISTINGUISHED ESTATE SOLD
TO BENEFIT A CHARITABLE FOUNDATION

**Gold and Diamond 'Starburst' Necklace,
David Yurman**

Of starburst design, set with numerous round
diamonds, gross weight approximately 42 dwts,
length approximately 16½ inches, signed. D.Y.

US\$ 5,000-7,000



685

PROPERTY FROM A DISTINGUISHED ESTATE SOLD
TO BENEFIT A CHARITABLE FOUNDATION

**Pair of Enamel and Diamond Earclips,
David Webb**

Designed as concentric squares applied with
black enamel and set with round diamonds,
signed Webb.

US\$ 6,000-8,000





686

PROPERTY FROM A DISTINGUISHED ESTATE
SOLD TO BENEFIT A CHARITABLE FOUNDATION

Diamond Necklace

Composed of numerous round diamonds,
length 33 inches.

US\$ 40,000-60,000

687

PROPERTY FROM A DISTINGUISHED ESTATE SOLD
TO BENEFIT A CHARITABLE FOUNDATION

Pair of Tanzanite, Black Opal and Diamond Earrings

The surmounts set with oval-shaped tanzanites, suspending triangle and pear-shaped black opal doublets backed with wood, further accented by round diamonds.

US\$ 7,000-9,000



688

PROPERTY FROM A DISTINGUISHED ESTATE SOLD
TO BENEFIT A CHARITABLE FOUNDATION

Diamond Bangle-Bracelet, Alan Rocca

Centering a radiant-cut diamond, flanked by four square-cut diamonds and two radiant-cut diamonds, surrounded by numerous round diamonds, *internal circumference 6½ inches, with maker's mark AR for Alan Rocca.*

US\$ 20,000-30,000



689

PROPERTY FROM A DISTINGUISHED ESTATE SOLD
TO BENEFIT A CHARITABLE FOUNDATION

Pair of Diamond Earrings

Each suspending two cushion-cut diamonds, highlighted by numerous round diamonds.

US\$ 7,000-9,000



690

PROPERTY FROM A DISTINGUISHED ESTATE SOLD
TO BENEFIT A CHARITABLE FOUNDATION

**Gold Necklace and Bracelet,
Henry Dunay**

The necklace and bracelet of woven design,
total gross weight approximately 173 dwts, *the
necklace length 17 inches, numbered B4483, the
bracelet length 7³/₈ inches, numbered C1731; both
signed Dunay.*

US\$ 8,000-12,000



691

PROPERTY FROM A DISTINGUISHED ESTATE SOLD
TO BENEFIT A CHARITABLE FOUNDATION

**White Topaz and Pink Tourmaline
'Candy' Ring, Verdura**

Set with a white topaz cabochon, the split shank
prongs accented by tourmaline cabochons,
*size 5³/₄, signed Verdura, with Italian assay and
registry marks.*

US\$ 3,500-4,500



692

PROPERTY FROM A DISTINGUISHED ESTATE SOLD
TO BENEFIT A CHARITABLE FOUNDATION

**Gold, Coral and Cultured Pearl
'Marrakech' Sautoir, Henry Dunay**

The ropetwist chain supporting a tassel composed of a carved coral and an off-round cultured pearl measuring approximately 12.3 x 16.8 mm, gross weight approximately 101 dwts, length 24 inches, signed Dunay, numbered C9113, with maker's mark.

Please note this property cannot be shipped internationally due to endangered species materials.

• **US\$ 4,000-6,000**



693

PROPERTY FROM A DISTINGUISHED ESTATE SOLD
TO BENEFIT A CHARITABLE FOUNDATION

**Pair of Lapis Lazuli, Coral and Malachite
Earclips, Van Cleef & Arpels, Van Cleef
& Arpels, France**

Composed of lapis lazuli, coral and malachite segments, accented by round diamonds, signed VCA, numbered NY 8K605-75, Made in France, with French assay and workshop marks. Fitted with posts.

Please note this property cannot be shipped internationally due to endangered species materials.

• **US\$ 4,000-6,000**





694

PROPERTY FROM A DISTINGUISHED ESTATE SOLD
TO BENEFIT A CHARITABLE FOUNDATION

**Tanzanite, Aquamarine and Diamond
Necklace, Kim Poor**

Composed of six strands of tanzanite beads,
the clasp set with two carved pear-shaped
aquamarines and accented with round diamonds,
*length 20 inches, signed Kim Poor, with British
hallmarks and maker's mark.*

US\$ 8,000-12,000

695

PROPERTY FROM A DISTINGUISHED ESTATE SOLD
TO BENEFIT A CHARITABLE FOUNDATION

**Pair of Gold and Diamond Earclips and
Bracelet**

Of floral motif, the flexible gold bracelet set
with round diamonds, the earrings similarly set,
bracelet length 7½ inches, signed A.R.

US\$ 5,000-7,000



696

PROPERTY FROM A DISTINGUISHED ESTATE SOLD
TO BENEFIT A CHARITABLE FOUNDATION

**Gold and Tanzanite 'Klimt' Ring, Carolyn
Tyler**

Centering a bezel-set cabochon tanzanite, the
mounting accented with textured gold and round
tanzanites, *signed C. Tyler, numbered 10679,
size 8.*

US\$ 12,000-15,000



697

PROPERTY FROM A DISTINGUISHED ESTATE SOLD
TO BENEFIT A CHARITABLE FOUNDATION

Gold and Diamond Necklace

Of woven design, set with numerous round diamonds, gross weight approximately 100 dwts, length 16 inches.

US\$ 8,000-12,000



698

PROPERTY FROM A DISTINGUISHED ESTATE SOLD
TO BENEFIT A CHARITABLE FOUNDATION

Gold, Ruby and Diamond Ring, Henry Dunay

Set with a cabochon ruby measuring approximately 23.3 x 13.4 x 7.5 mm within an architectural gold mounting, accented by round diamonds, *signed Dunay, numbered B3000*.

US\$ 7,000-9,000





THIS PAGE
LOTS 537 & 687





699

PROPERTY FROM A DISTINGUISHED ESTATE SOLD
TO BENEFIT A CHARITABLE FOUNDATION

Gold and Diamond Ring

Of rope motif, set with a round diamond weighing
5.03 carats, size 6¼.

*Accompanied by GIA report no. 2195168053
stating that the diamond is G color, SI1 clarity.*

US\$ 50,000-70,000

700

PROPERTY FROM A DISTINGUISHED ESTATE SOLD
TO BENEFIT A CHARITABLE FOUNDATION

Gold and Diamond 'Double Crescent' Bracelet, Verdura

Composed of a series of gold annular links,
centering on a pavé-set interlocking motif
with numerous round diamonds, gross weight
approximately 82 dwts, length 7¼ inches, signed
Verdura, numbered VB3265.

*The original 'Double Crescent' bracelet was
designed for Marjorie Merriweather Post in 1945
and the style continues to be made and sought
after today.*

US\$ 15,000-20,000



701

PROPERTY FROM A DISTINGUISHED ESTATE SOLD
TO BENEFIT A CHARITABLE FOUNDATION

Amethyst, Diamond and Ruby 'Bird on a Rock' Brooch, Schlumberger for Tiffany & Co.

Set with an oval-shaped amethyst, surmounted
by a bird set with round diamonds, the eye
set with a round ruby, signed Tiffany & Co.,
Schlumberger.

US\$ 15,000-20,000



702

PROPERTY FROM A DISTINGUISHED ESTATE SOLD
TO BENEFIT A CHARITABLE FOUNDATION

Pair of Amethyst and Diamond Pendant- Earclips

Suspending two briolette amethysts measuring
approximately 25.9 x 11.5 mm, topped by oval,
pear and marquise-shaped and round diamonds;
pendants detachable. Fitted with posts.

US\$ 5,000-7,000



703

Fancy Yellow Diamond and Diamond Ring



Set with a cut-cornered rectangular modified brilliant-cut Fancy Yellow diamond weighing 3.51 carats flanked by tapered baguette diamonds, size 7.

Accompanied by GIA report 5191053620 stating that the diamond is Fancy Yellow, Natural Color, VS2 clarity.

US\$ 25,000-35,000

704

Pair of Fancy Colored Diamond and Diamond Earrings



Designed as flowerheads, the centers set with a cushion-cut Fancy Pink diamond weighing 0.21 carat and a cushion-cut Fancy Light Gray-Blue diamond weighing 0.18 carat, the petals set with pear-shaped fancy colored and white diamonds weighing from 0.22 to 0.54 carat.

Accompanied by GIA report no. 6187783725 stating that the diamond weighing 0.18 carat is Fancy Light Gray-Blue, Natural Color.

Accompanied by GIA report no. 1152846868 stating that the diamond weighing 0.21 carat is Fancy Pink, Natural Color.

Accompanied by 12 additional GIA reports stating that the diamonds weighing between 0.22 to 0.54 carat are D color, Fancy Intense Yellow, Fancy Intense Yellowish Orange, Fancy Brownish Orangy Pink, Fancy Intense Orange Yellow, Light Pink-Brown, Fancy Intense Yellow, Fancy Greenish Yellow and Fancy Gray, Natural Color, ranging from VS2 clarity to Internally Flawless.

US\$ 20,000-30,000

705

Pair of Diamond Studs

Each set with round diamonds weighing 1.53 and 1.51 carats.

Accompanied by GIA report nos. 5186382936 and 1199120805 stating that both diamonds are J color, SI1 clarity, with Excellent Cut, Polish and Symmetry.

US\$ 15,000-20,000



706

PROPERTY OF A PRIVATE COLLECTOR

Diamond Ring, Graff

Centering a round diamond weighing 3.00 carats, flanked by two pear-shaped diamonds, size 5¾, signed Graff. With signed box.

Accompanied by GIA report no. 2181965877 stating that the diamond is E color, VS2 clarity.

US\$ 35,000-45,000





707

Aquamarine and Diamond Pendant

Set with a cushion-cut aquamarine measuring approximately 40.0 x 29.2 x 18.9 mm, framed by round diamonds, *one diamond missing*.

US\$ 3,000-5,000



708

PROPERTY OF A LADY

Cultured Pearl and Diamond Bracelet, Cartier, France

The torsade bracelet composed of 16 strands of cultured pearl beads measuring approximately 2.5 to 2.0 mm, the clasp designed as a hook set with round diamonds, *length 7½ inches, signed Cartier, numbered 6011314, with French assay and workshop marks*. With signed box.

US\$ 5,000-7,000



709

Pair of Pink Sapphire and Diamond Earclips

Designed as flowers, each centering a round pink sapphire weighing approximately 2.30 carats, surrounded by pear and marquise-shaped diamonds.

US\$ 15,000-20,000

710

Multi-Colored Sapphire, Emerald and Diamond Necklace and Pair of Earclips, Bulgari

The gold chain link necklace set with three oval-shaped sapphires, one pink, one blue, and one yellow, flanked by pear-shaped cabochon emeralds, accented by round diamonds, the matching earclips set with one pink and one yellow sapphire, *necklace length 15½ inches, signed Bulgari, with Italian assay and registry marks.* With signed pouch and earclips fitted with posts.

US\$ 25,000-35,000



711

PROPERTY FROM A NEW YORK ESTATE

Gold Watch, Cartier

The square-shaped dial with baton indicators set to the curb-link chain bracelet, mechanical movement, gross weight approximately 47 dwts, *length 7½ inches, the dial signed Cartier, the caseback numbered 269977, with French assay marks.*

US\$ 3,000-5,000





712

**Gold, Sapphire and Diamond Necklace,
Cartier, Paris**

Composed of rectangular-shaped links suspending a pendant set with an oval-shaped sapphire weighing approximately 3.25 carats accented by round and baguette diamonds and cabochon sapphires, *length 16 inches, signed Cartier Paris, numbered 226941, with French assay marks.* With signed box.

Accompanied by AGL report no. 1089868 stating that the sapphire is of Burmese origin, with no indications of heating.

US\$ 12,000-15,000



713

PROPERTY FROM A NEW YORK ESTATE

**Sapphire and Diamond Bracelet, Cartier,
Paris**

Composed of seven strands of sapphire beads, the clasp accented with numerous round diamonds, *length 8½ inches, signed Cartier Paris, numbered 017157, with French assay and maker's mark.*

US\$ 10,000-15,000



714

PROPERTY OF A LADY

**Pair of Sapphire and Diamond Earclips,
Marina B**

Each pear-shaped design set with an oval-shaped sapphire highlighted with round diamonds, *signed Marina B, with maker's mark and Italian assay and registry marks.*

US\$ 10,000-15,000

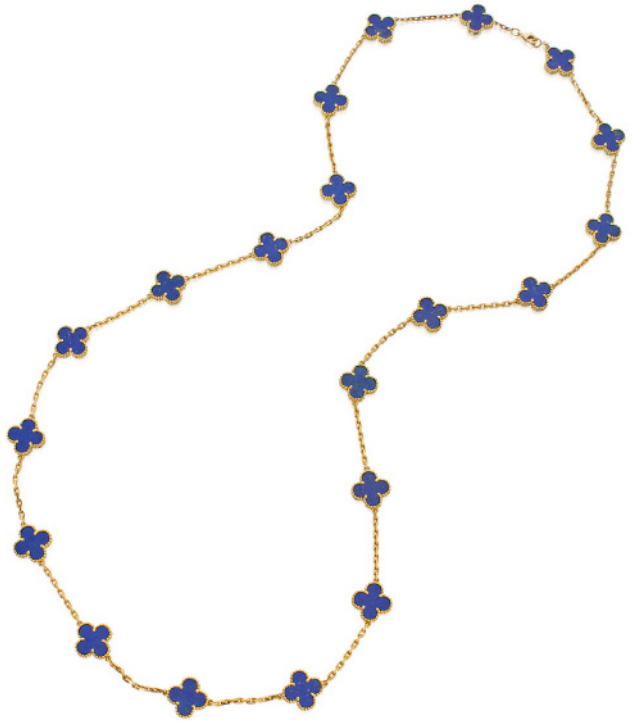
715

Lapis Lazuli 'Alhambra' Necklace, Van Cleef & Arpels, France

Composed of quatrefoil-shaped lapis lazuli links, length 33½ inches, signed VCA, numbered 4K629.132, with French assay mark. With signed envelope.

Accompanied by a Certificate of Authenticity from Van Cleef & Arpels.

US\$ 8,000-12,000



716

PROPERTY FROM A PRIVATE COLLECTION

Gem-Set, Enamel, Lacquer and Turquoise Clip-Brooch, Tiffany & Co., Schlumberger Studios, France

Designed as a parrot, set with round tsavorite garnets, the beak embellished with a pear-shaped turquoise cabochon and black lacquer, the eye highlighted with a round pink sapphire, the body and tail applied with blue and green enamel, gross weight approximately 49 dwts, signed Tiffany & Co. Schlumberger Std., France.

US\$ 12,000-15,000





717

Gold and Diamond Necklace, Bulgari

Of modular design, the polished gold links highlighted with round diamonds, *length 15½ inches, signed Bulgari, with Italian and French marks.* With signed envelope.

US\$ 20,000-30,000



718

Enamel Bracelet, David Webb, France

Composed of links designed as lion's heads, applied with black and white enamel, the eyes applied with red enamel, *length 7½ inches, signed Webb, with French assay and workshop marks.*

Accompanied by a Certificate of Authenticity from David Webb.

US\$ 12,000-15,000



△ 719

Pair of Ruby and Diamond Earclips, David Webb

Of bombé form, set with cabochon rubies accented by round diamonds, the hinged backs set with beaded goldwork, *signed Webb.*

US\$ 8,000-12,000

720

Gold and Diamond Necklace and Pair of Earclips, Cartier

The gold necklace composed of interlocking gold links, highlighted with diamonds, the earclips similarly set, total gross weight approximately 108 dwts, *necklace internal circumference 15¼ inches, signed Cartier, the necklace numbered D97182, the earclips each numbered D97217; circa 1996.* Fitted with posts for pierced ears.

US\$ 10,000-15,000



721

Pair of Diamond Earclips

The oval hoops set with round diamonds. Fitted with posts.

US\$ 6,000-8,000



722

PROPERTY FROM A DISTINGUISHED FAMILY

Emerald and Diamond Ring and Pair of Earclips, Giovane

The ring centering an oval-shaped emerald cabochon measuring approximately 17.1 x 12.5 x 8.8 mm, accented by round and baguette diamonds, *size 8 ¾*; the earclips similarly set with oval-shaped emerald cabochons measuring approximately 18.6 x 14.7 x 9.0 mm and 18.0 x 14.2 x 8.1 mm, accented by pear-shaped emerald cabochons and baguette diamonds, *all pieces signed Giovane, with Italian assay and registry marks.*

US\$ 5,000-7,000





THIS PAGE
LOTS 587 & 614



723

**Carnelian and Aventurine Quartz
Necklace, Aldo Cipullo**

Composed of circular carnelian links, with polished pyramid-shaped aventurine quartz spacers, *length 20 inches, signed A. Cipullo, with maker's mark.*

US\$ 25,000-35,000



724

PROPERTY FROM A PRIVATE COLLECTION,
GREENWICH, CONNECTICUT

**Gold and Diamond Bracelet, Cartier,
Paris**

Composed of gold links resembling chain mail embellished with bezel-set round diamonds, *length 7 inches, signed Cartier Paris, partially numbered, with French assay and workshop marks. With signed box.*

US\$ 10,000-15,000



725

PROPERTY FROM A NEW YORK ESTATE

Gold Necklace, Fred

Composed of interlocking polished gold links, gross weight approximately 120 dwts, length 18½ inches, with maker's mark and Italian registry marks.

US\$ 7,500-10,000



726

Pair of Rock Crystal and Diamond 'Twilight' Earclips, David Webb

The button-shaped fluted rock crystal surmounts, framed in hammered gold, suspending carved rock crystal hoops accented by round diamonds and hammered gold, signed Webb.

Accompanied by a Certificate of Authenticity from David Webb.

US\$ 9,000-12,000



727

PROPERTY FROM A FAMILY COLLECTION

Diamond Ring

Set with a cushion-cut diamond weighing 6.51 carats, the mounting further highlighted with single-cut diamonds, size 6¾.

Accompanied by GIA report no. 5191119256 stating that the diamond is L color, VS2 clarity.

US\$ 15,000-20,000





728

Pair of Emerald and Diamond Earrings

The two drop-shaped emeralds together weighing approximately 37.00 carats, capped by round diamonds and suspended from cascading round and pear-shaped diamonds.

US\$ 20,000-30,000



729

Pair of Diamond Earclips

Designed as stylized leaves, set with round diamonds.

US\$ 15,000-20,000



730

PROPERTY OF A LADY

Diamond Ring, Tiffany & Co.

Set with an oval-shaped diamond weighing 3.00 carats flanked by triangle-shaped diamonds, size 5, signed *Tiffany & Co.*

Accompanied by GIA report no. 11018120 dated January 20, 2000 stating that diamonds is F color, VS1 clarity.

Accompanied by Tiffany & Co. Diamond Certificate S01525/DEV400371 stating that the diamond is F color, VS1 clarity.

US\$ 30,000-40,000

731

Diamond Necklace

Composed of a line of alternating rose-cut and briolette diamonds, *length 25¾ inches.*

US\$ 20,000-30,000



732

Pink Tourmaline, White Sapphire and Diamond Ring, Sifen Chang

Of floral design, set with a cabochon pink tourmaline weighing 29.73 carats, the petals bezel-set with rose-cut round and pear-shaped white sapphires, further pavé-set with round diamonds, *size 6¾, signed Sifen Chang in Chinese characters.* With signed box.

US\$ 8,000-12,000



733

Pair of Diamond Earrings

Designed as drops, suspending cushion-cut diamonds weighing 1.54 and 1.51 carats, within a surround of round diamonds.

Accompanied by GIA report no. 1156192786, dated January 4, 2013, stating that the diamond weighing 1.54 carats is K color, VVS2 clarity.

Accompanied by GIA report no. 7193469268 stating that the diamond weighing 1.51 carats is J color, SI1 clarity.

US\$ 10,000-15,000





734

Sapphire, Cultured Pearl, Diamond and Enamel Necklace, David Webb

Designed as a strand of sapphire beads alternating with green enamel rondelles, accented by six cultured pearls, flanked by rondelles set with round diamonds, *length 18¼ inches, signed Webb.*

US\$ 10,000-15,000



735

Pair of Diamond Earrings

The hoops pavé-set with round diamonds.

US\$ 6,000-8,000

736

Peridot and Diamond Ring

Centering an oval-shaped peridot cabochon weighing approximately 22.45 carats, surrounded by round diamonds, size 6¾.

US\$ 8,000-12,000



737

Pair of Tourmaline, Diamond and Cultured Pearl Earrings, Michele della Valle

Composed of two carved tourmaline tablets carved with floral motifs, accented by round diamonds, and suspending drop-shaped cultured pearls, signed *MdV*.

US\$ 4,000-6,000



738

Sapphire and Diamond Ring

Of floral design, centering a round diamond weighing 0.58 carat, the petals set with pear-shaped sapphires, the mounting further set with smaller round diamonds, size 6½.

Accompanied by AGL report no. CS 63456 stating that the sapphires are of Ceylon origin, with no indication of heating.

Accompanied by GIA report no. 2141806205, dated July 10, 2012, stating that the diamond is F color, VS1 clarity.

US\$ 15,000-20,000





739

PROPERTY FROM AN IMPORTANT PRIVATE COLLECTION

Diamond Necklace

Composed of round diamonds, suspending a pear-shaped diamond weighing 2.54 carats, two oval-shaped diamonds, and a heart-shaped diamond weighing 1.95 carats, *length 15 inches.*

Accompanied by GIA report no. 2181895588 stating that the pear-shaped diamond is D color, VVS2 clarity. Together with the original working diagram stating that the diamond may be potentially Internally Flawless.

Accompanied by GIA report no. 1182895223 stating that the heart-shaped diamond is D color, VVS1 clarity. Together with the original working diagram stating that the diamond may be potentially Internally Flawless.

PROVENANCE

Sotheby's, December 7 and 8, 1983, Important Contemporary and Period Jewelry, Watches and Clocks, lot 758.

US\$ 50,000-70,000

740

PROPERTY OF A LADY, CHICAGO, ILLINOIS

Diamond Brooch

Designed as a cascading ribbon, set with baguette, marquise and pear-shaped diamonds.

US\$ 20,000-30,000



741

PROPERTY OF A LADY

Emerald and Diamond Wristwatch, Switzerland

The rectangular-shaped dial set with baton and dot indicators, the case and bracelet millegrain-set with old European and single-cut diamonds, accented by two emerald-cut and eight calibré-cut emeralds, length 6¼ inches, dial and movement signed Audemars Piguet, movement numbered 29617, caseback signed Vacheron & Constantin Genève Suisse and numbered 247341; circa 1925.

US\$ 8,000-12,000



742

PROPERTY OF A LADY, CHICAGO, ILLINOIS

Pair of Diamond Earrings

Of scroll design, set with baguette and tapered baguette diamonds, accented with round diamonds.

US\$ 25,000-35,000





743

PROPERTY OF A PRIVATE COLLECTOR

Natural Pearl and Diamond Necklace

Composed of a graduated line of 101 natural pearls measuring approximately 6.4 to 2.9 mm, on a bezel-set marquise-shaped diamond clasp, length $17\frac{3}{4}$ inches, numbered 29.

Accompanied by GIA report no. 6187680998 stating that the pearls are natural, saltwater.

US\$ 6,000-8,000



744

Enamel and Diamond Bracelet

Composed of navette-shaped links applied with black enamel alternating with round links set with old European-cut diamonds, length $6\frac{3}{4}$ inches.

US\$ 6,000-8,000



745

PROPERTY OF A PRIVATE COLLECTOR

Diamond Ring

Set with an emerald-cut diamond weighing 3.55 carats, size 6.

Accompanied by GIA report no. 5191142151 stating that the diamond is H color, VVS2 clarity.

US\$ 20,000-30,000

746

PROPERTY OF A LADY

Black Opal and Diamond Ring

Set with a black opal plaque, measuring approximately 21.0 x 15.0 x 5.0 mm, flanked by tapered baguette diamonds, size 7.

US\$ 6,000-8,000



747

PROPERTY FROM A FAMILY COLLECTION

Diamond Bracelet

Of buckle design, composed of a series of openwork links millegrain-set with old European, single-cut and baguette diamonds, length 6¾ inches.

US\$ 4,000-6,000



748

Emerald and Diamond Ring

Set with an emerald-cut emerald weighing 6.41 carats, flanked by two kite-shaped step cut diamonds, further accented by numerous round diamonds, size 6½.

Accompanied by AGL report no. 1089590 stating that the emerald is of Colombian origin, clarity enhancement: minor, type: traditional.

US\$ 25,000-35,000





749

Diamond Double Clip-Brooch

The pair of geometric clips set with round, baguette, emerald- and single-cut diamonds, together with a carrier for wear as a double-clip brooch.

US\$ 20,000-30,000



750

PROPERTY OF A COLLECTOR

Fancy Brown-Pink Diamond and Diamond Ring

Centering a round-cornered rectangular-cut Fancy Brown-Pink diamond weighing 2.58 carats within a double frame of round diamonds of pink hue and near colorless hue, the shank further embellished with round diamonds, size 6.

Accompanied by GIA report no. 2181822437 stating that the diamond is Fancy Brown-Pink, Natural Color, I1 clarity.

Please note that the round diamonds of pink hue have not been tested for natural origin of color.

US\$ 25,000-35,000



751

PROPERTY FROM AN IMPORTANT PRIVATE COLLECTION

Pair of Diamond Earclips

Of stylized foliate design, centering on round diamonds weighing 2.08 and 2.05 carats, further set with numerous round and baguette diamonds. Fitted with posts.

US\$ 18,000-22,000

752

PROPERTY OF A LADY, NEW YORK

Diamond Ring

Set with an emerald-cut diamond weighing 7.91 carats, accented by two tapered baguette diamonds, size 5½.

Accompanied by GIA report no. 5181907069 stating that the diamond is K color, VS2 clarity.

US\$ 40,000-60,000





753

PROPERTY OF A LADY

**Suite of Gold and Onyx 'Alhambra'
Jewelry, Van Cleef & Arpels, France**

Comprising: a necklace suspending an onyx quatrefoil-shaped pendant on a fine link chain, *length adjustable from 16½ to 15 inches, signed VCA, numbered CL9610, with French assay mark*; a bracelet composed of five onyx quatrefoil-shaped links, *length 7 inches, signed VCA, numbered CL6528, with French assay mark*; and a pair of earrings of similar design, fitted with posts, *signed VCA, numbered CL2177, with French assay mark*.

US\$ 7,000-10,000



754

**Diamond and Enamel Bracelet,
Schlumberger for Tiffany & Co., France**

Applied with black enamel, highlighted with bezel-set round diamonds and fluted gold, *internal circumference 6½ inches, signed Tiffany & Co., Schlumberger*.

US\$ 30,000-50,000

755

Tourmaline and Diamond Ring

Centering an oval-shaped tourmaline weighing 18.96 carats, accented by numerous round diamonds, size 6¾, with French assay and Italian registry marks.

Accompanied by GIA report no. 2175977899 stating that the tourmaline is Purplish Pink, with no indications of clarity enhancement.

US\$ 9,000-12,000



756

PROPERTY OF A LADY

Pair of Diamond and Onyx Earrings, Van Cleef & Arpels, France

Of bombé design, set with round diamonds and onyx, signed Van Cleef & Arpels, numbered M37361, with French assay and workshop marks.

US\$ 15,000-20,000



757

Pair of Gem-Set and Diamond Earclips, Bulgari

Bezel-set with two oval-shaped pink tourmalines, framed by cabochon amethysts and peridots, accented by round diamonds, signed Bulgari, with Italian assay and registry marks. With signed box and fitted with retractable posts.

US\$ 18,000-22,000





758

Gold, Citrine, Ruby and Diamond Bracelet

The emerald-cut citrine measuring approximately 44.1 x 33.0 x 21.7 mm, flanked by lines of square-cut rubies and scroll motifs set with European-cut diamonds, on a flexible gold bracelet of geometric design, length 6½ inches; circa 1940s.

US\$ 7,000-9,000



759

Coral, Enamel and Diamond 'Coccinelle' Clip-Brooch, Cartier, Paris

Designed as a ladybug, the wings of carved coral highlighted with bezel-set round diamonds, the head and legs applied with black enamel and similarly-set diamonds, signed Cartier Paris, partially numbered, with French assay and maker's marks.

Please note this property cannot be shipped internationally due to endangered species materials.

⦿ **US\$ 15,000-20,000**



760

Pair of Gold and Diamond Bracelets, Verdura

Each designed as a double row of round diamonds flanked by polished gold ropework, length 7 inches, signed Verdura. With signed pouch.

US\$ 15,000-20,000

761

PROPERTY OF A PRIVATE COLLECTOR

Diamond Clip-Brooch, Cartier, France

The gold ribbon highlighted with round diamonds, *signed Cartier Inc, with French assay and workshop marks.*

US\$ 15,000-20,000



762

PROPERTY OF A PRIVATE COLLECTOR

Gold and Diamond Bracelet and Ring, Cartier, France

Comprising: a bracelet composed of fluted gold links highlighted by round diamonds, *length 6½ inches, signed Cartier Inc, with French assay and workshop marks;* and a ring of similar design, size 5, *signed Cartier Inc, with French workshop mark.*

US\$ 15,000-20,000



763

PROPERTY OF A PRIVATE COLLECTOR

Pair of Gold and Diamond Earclips, Cartier, France

Each designed as a pair of interlocking crescent-shapes, one pavé-set with round diamonds, the other composed of fluted gold, *signed Cartier Inc., Made in France, numbered 199, with French assay and maker's marks.*

US\$ 8,000-10,000



End of Sale



ANDY WARHOL. \$(4), 1982

TREASURE THE ART.
UNLOCK THE VALUE.

As the art market reaches new heights, it is time to look at your art in a new light.

Sotheby's Financial Services allows you to enjoy your investment in fine art, decorative art or jewellery with renewed liquidity, capitalising on its value while maintaining ownership.

With over 25 years of experience in art lending, more than \$4 billion in loans made to date, and in-depth knowledge of the international art market, we can arrange truly bespoke financing solutions for our clients.

Comprehensive valuations from renowned specialists combined with unparalleled market expertise enable us to offer loans discreetly and with unmatched speed.

Contact us for a confidential consultation today.

Enquiries

New York +1 212 894 1130

Londres +44 (0) 207 293 6006

Hong Kong +852 2822 8188

services@sothebysfinancial.com

sothebysfinancial.com

Sotheby's EST. 1744
Financial Services

Sotheby's EST. 1744

Collectors gather here.

'The Farnese Blue'

Property of a Princely Family

Historic and Highly Important Fancy Dark

Grey-Blue diamond jewel weighing 6.16 carats

Estimate CHF 3,500,000–5,000,000

/ US\$ 3,690,000–5,270,000

Magnificent Jewels and Noble Jewels

Auction Geneva 15 May 2018



**Upcoming Jewellery
Auctions 2018**

Magnificent Jewels

New York 18 April

Fine Jewels

New York 19 April

**Magnificent Jewels
and Noble Jewels**

Geneva 15 May

Jewels Online

17 – 30 May

Jewels Online

1 – 15 June

Fine Jewels

London 6 June

Fine Jewels

Geneva 14 June

**Jewels &
Watches Online**

22 June – 2 July

Jewels Online

5 – 18 July

ENQUIRIES

LONDON +44 (0)20 7293 6409

GENEVA +41 (0)22 908 4849

SOTHEBYS.COM/JEWELS

HONG KONG +852 2822 8112

NEW YORK +1 212 606 7392

DOWNLOAD SOTHEBY'S APP

FOLLOW US @SOTHEBYS

#SOTHEBYSJEWELS



Sotheby's EST. 1744

Collectors gather here.



Diamond Brooch
Cartier, Paris, circa 1910
Estimate \$50,000–70,000

THE JEWELER'S EYE

THE PERSONAL COLLECTION OF FRED LEIGHTON

Auction New York 18 April 2018

Viewing 13–18 April

1334 YORK AVENUE, NEW YORK, NY 10021
ENQUIRIES +1 212 606 7392
SOTHEBYS.COM/LEIGHTON

DOWNLOAD SOTHEBY'S APP
FOLLOW US @SOTHEBYS
#SOTHEBYSJEWELS



CONDITIONS OF SALE

The following Conditions of Sale and Terms of Guarantee are Sotheby's, Inc. and the Consignor's entire agreement with the purchaser and any bidders relative to the property listed in this catalogue.

The Conditions of Sale, Terms of Guarantee, the glossary, if any, and all other contents of this catalogue are subject to amendment by us by the posting of notices or by oral announcements made during the sale. The property will be offered by us as agent for the Consignor, unless the catalogue indicates otherwise.

By participating in any sale, you acknowledge that you are bound by these terms and conditions.

1. **As Is** Goods auctioned are often of some age. The authenticity of the Authorship (as defined below) of property listed in the catalogue is guaranteed as stated in the Terms of Guarantee and except for the Limited Warranty contained therein, all property is sold "AS IS" without any representations or warranties by us or the Consignor as to merchantability, fitness for a particular purpose, the correctness of the catalogue or other description of the physical condition, size, quality, rarity, importance, medium, frame, provenance, exhibitions, literature or historical relevance of any property and no statement anywhere, whether oral or written, whether made in the catalogue, an advertisement, a bill of sale, a salesroom posting or announcement, or elsewhere, shall be deemed such a warranty, representation or assumption of liability. We and the Consignor make no representations and warranties, express or implied, as to whether the purchaser acquires any copyrights, including but not limited to, any reproduction rights in any property. We and the Consignor are not responsible for errors and omissions in the catalogue, glossary, or any supplemental material. Sotheby's

will not be responsible or liable for damage to frames and glass coverings, regardless of the cause.

2. **Inspection** Prospective bidders should inspect the property before bidding to determine its condition, size, and whether or not it has been repaired or restored.

3. **Buyer's Premium** A buyer's premium will be added to the hammer price and is payable by the purchaser as part of the total purchase price. The buyer's premium is 25% of the hammer price up to and including \$300,000, 20% of any amount in excess of \$300,000 up to and including \$3,000,000, and 12.9% of any amount in excess of \$3,000,000.

4. **Withdrawal** We reserve the right to withdraw any property before the sale and shall have no liability whatsoever for such withdrawal.

5. **Per Lot** Unless otherwise announced by the auctioneer, all bids are per lot as numbered in the catalogue.

6. **Bidding** We reserve the right to reject any bid. The highest bidder acknowledged by the auctioneer will be the purchaser. The auctioneer has absolute and sole discretion in the case of error or dispute with respect to bidding, and whether during or after the sale, to determine the successful bidder, to re-open the bidding, to cancel the sale or to re-offer and re-sell the item in dispute. If any dispute arises after the sale, our sale record is conclusive. In our discretion we will execute order or absentee bids and accept telephone bids and online bids via BIDnow, eBay, Invaluable or other online platforms as a convenience to clients who are not present at auctions; Sotheby's is not responsible for any errors or omissions in connection therewith. Prospective bidders should also consult sothebys.com for the most up to date cataloging of the property in this catalogue.

By participating in the sale, you represent and warrant that any bids placed by you, or on your behalf, are not the product of any collusive or other anti-competitive agreement and are otherwise consistent with federal and state antitrust law.

In order to bid on "Premium Lots" you must complete the required Premium Lot pre-registration application. Sotheby's decision whether to accept any pre-registration application shall be final. You must arrange for Sotheby's to receive your pre-registration application at least three working days before the sale. Please bear in mind that we are unable to obtain financial references over weekends or public holidays.

Sotheby's may require such necessary financial references, guarantees, deposits and/or such other security, in its absolute discretion, as security for your bid(s).

7. **Online Bids via BIDnow or other Online Platforms:** Sotheby's may offer clients the opportunity to bid online via BIDnow, eBay, Invaluable or other Online Platforms for selected sales. By participating in a sale via any of these Online Platforms, you acknowledge that you are bound by these Conditions of Sale as well as the Additional Terms and Conditions for Live Online Bidding ("Online Terms"). By participating in a sale via any Online Platform, Bidders accept the Online Terms, as well as the relevant Conditions of Sale. Online bidding may not be available for Premium Lots.

8. **Bids Below Reserve** If the auctioneer determines that any opening bid is below the reserve of the article offered, he may reject the same and withdraw the article from sale, and if, having acknowledged an opening bid, he determines that any advance thereafter is insufficient, he may reject the advance.

9. **Purchaser's Responsibility** Subject to fulfillment of all of the conditions set

forth herein, on the fall of the auctioneer's hammer, the contract between the consignor and the purchaser is concluded, and the winning bidder thereupon will immediately pay the full purchase price or such part as we may require. Title in a purchased lot will not pass until Sotheby's has received the full purchase price in cleared funds. The purchaser's obligation to immediately pay the full purchase price or such part as we may require is absolute and unconditional and is not subject to any defenses, setoffs or counterclaims of any kind whatsoever. Sotheby's is not obligated to release a lot to the purchaser until title to the lot has passed and any earlier release does not affect the passing of title or the purchaser's unconditional obligation to pay the full purchase price. In addition to other remedies available to us by law, we reserve the right to impose from the date of sale a late charge of the annual percentage rate of Prime + 6% of the total purchase price if payment is not made in accordance with the conditions set forth herein. Please note Sotheby's reserves the right to refuse to accept payment from a source other than the buyer of record.

Unless otherwise agreed by Sotheby's, all property must be removed from our premises by the purchaser at his expense not later than 30 calendar days following its sale. Purchasers are reminded that Sotheby's liability for loss of or damage to sold property shall cease upon the earlier of (a) 30 calendar days after the date of the auction and (b) our release of the property to the purchaser or the purchaser's designated agent. Upon the expiration of such 30 calendar day period or upon such earlier release, as applicable: (i) the purchaser bears full liability for any and all loss of or damage to the property; (ii) the purchaser releases Sotheby's, its affiliates, agents and warehouses from any and all liability and claims for loss of or damage to the property; and (iii) the purchaser agrees to indemnify and hold Sotheby's, its affiliates, agents and warehouses

harmless from and against any and all liability for loss of or damage to property and any all claims related to loss of or damage to the property as of and from and after the time Sotheby's liability for loss or damage to the property ceases in accordance with this paragraph. If any applicable conditions herein are not complied with by the purchaser, the purchaser will be in default and in addition to any and all other remedies available to us and the Consignor by law, including, without limitation, the right to hold the purchaser liable for the total purchase price, including all fees, charges and expenses more fully set forth herein, we, at our option, may (x) cancel the sale of that, or any other lot or lots sold to the defaulting purchaser at the same or any other auction, retaining as liquidated damages all payments made by the purchaser, or (y) resell the purchased property, whether at public auction or by private sale, or (z) effect any combination thereof. In any case, the purchaser will be liable for any deficiency, any and all costs, handling charges, late charges, expenses of both sales, our commissions on both sales at our regular rates, legal fees and expenses, collection fees and incidental damages. We may, in our sole discretion, apply any proceeds of sale then due or thereafter becoming due to the purchaser from us or any affiliated company, or any payment made by the purchaser to us or any affiliated company, whether or not intended to reduce the purchaser's obligations with respect to the unpaid lot or lots, to the deficiency and any other amounts due to us or any affiliated companies. In addition, a defaulting purchaser will be deemed to have granted and assigned to us and our affiliated companies, a continuing security interest of first priority in any property or money of or owing to such purchaser in our possession, custody or control or in the possession, custody or control of any of our affiliated companies, in each case whether at the time

of the auction, the default or if acquired at any time thereafter, and we may retain and apply such property or money as collateral security for the obligations due to us or to any affiliated company of ours. We shall have all of the rights accorded a secured party under the New York Uniform Commercial Code. You hereby agree that Sotheby's may file financing statements under the New York Uniform Commercial Code without your signature. Payment will not be deemed to have been made in full until we have collected good funds. Any claims relating to any purchase, including any claims under the Conditions of Sale or Terms of Guarantee, must be presented directly to Sotheby's. In the event the purchaser fails to pay any or all of the total purchase price for any lot and Sotheby's nonetheless elects to pay the Consignor any portion of the sale proceeds, the purchaser acknowledges that Sotheby's shall have all of the rights of the Consignor to pursue the purchaser for any amounts paid to the Consignor, whether at law, in equity, or under these Conditions of Sale.

10. Reserve All lots in this catalogue are offered subject to a reserve, which is the confidential minimum hammer price at which a lot will be sold. No reserve will exceed the low presale estimate stated in the catalogue, or as amended by oral or posted notices. We may implement such reserve by opening the bidding on behalf of the Consignor and may bid up to the amount of the reserve, by placing successive or consecutive bids for a lot, or bids in response to other bidders. In instances where we have an interest in the lot other than our commission, we may bid up to the reserve to protect such interest. In certain instances, the Consignor may pay us less than the standard commission rate where a lot is "bought-in" to protect its reserve.

11. Tax Unless exempted by law, the purchaser will be required to pay the combined New York State

and local sales tax, any applicable compensating use tax of another state, and if applicable, any federal luxury or other tax, on the total purchase price. The rate of such combined tax is 8.875% in New York City and ranges from 7% to 8.625% elsewhere in New York.

12. Export and Permits It is the purchaser's sole responsibility to identify and obtain any necessary export, import, firearm, endangered species or other permit for the lot. Any symbols or notices in the sale catalogue reflect Sotheby's reasonable opinion at the time of cataloguing and are for bidders' general guidance only; Sotheby's and the Consignor make no representations or warranties as to whether any lot is or is not subject to export or import restrictions or any embargoes.

13. Governing Law and Jurisdiction These Conditions of Sale and Terms of Guarantee, as well as bidders', the purchaser's and our respective rights and obligations hereunder, shall be governed by and construed and enforced in accordance with the laws of the State of New York. By bidding at an auction, whether present in person or by agent, order bid, telephone, online or other means, all bidders including the purchaser, shall be deemed to have consented to the exclusive jurisdiction of the state courts of, and the federal courts sitting in, the State of New York. All parties agree, however, that Sotheby's shall retain the right to bring proceedings in a court other than the state and federal courts sitting in the State of New York.

14. Packing and Shipping We are not responsible for the acts or omissions in our packing or shipping of purchased lots or of other carriers or packers of purchased lots, whether or not recommended by us. Packing and handling of purchased lots is at the entire risk of the purchaser.

15. Limitation of Liability In no event will the aggregate liability of

Sotheby's and the consignor to a purchaser exceed the purchase price actually paid.

16. Data Protection Sotheby's will use information provided by its clients (or which Sotheby's otherwise obtains from eBay, Invaluable or other sources relating to its clients) for the provision of auction and other art-related services, loan services, client administration, marketing and otherwise to manage and operate its business, or as required by law, in accordance with Sotheby's Privacy Policy. This will include information such as the client's name and contact details, proof of identity, financial information, records of the client's transactions, and preferences. Some gathering of information about Sotheby's clients will take place using technical means to identify their preferences in order to provide a higher quality of service to them. Sotheby's may also disclose the client information to other Sotheby's Companies and/or third parties acting on their behalf to provide services for these purposes.

Sometimes, Sotheby's may also disclose this information to carefully selected third parties for their own marketing purposes. If you do not wish your details to be used for this purpose, please email enquiries@sothebys.com.

If the client provides Sotheby's with information that is defined by European data protection laws as "sensitive", the client agrees that it may be used for the purposes set out above.

In the course of these disclosures, personal data collected in the European Economic Area may be disclosed to countries outside the European Economic Area. Although such countries may not have legislation that protects a client's personal information, Sotheby's shall take great care to keep such information secure and in accordance with European data protection principles. By agreeing to these Conditions of Sale, the client is agreeing to such disclosure.

Please be aware that Sotheby's may film auctions or other activities on Sotheby's premises and that such recordings may be transmitted over the Internet via Sotheby's website, the eBay website, the Invaluable website and other Online Platforms. Telephone bids may be recorded.

Under European data protection laws, a client may object, by request and free of charge, to the processing of their information for certain purposes, including direct marketing, and may access and rectify personal data relating to them and may obtain more information about Sotheby's data protection policies by writing to Sotheby's, 34-35 New Bond Street, London W1A 2AA, or 1334 York Avenue, New York, NY 10021, Attn: Compliance, or emailing enquiries@sothebys.com. Sotheby's use of information collected about eBay users may differ and is governed by the terms of the eBay Privacy Policy and Sotheby's on eBay Live Auction Platform Privacy Policy, which can be found on the Sotheby's on eBay Live Auction Website. Sotheby's use of information collected about Invaluable users may differ and is governed by the terms of the Invaluable Privacy Policy and Sotheby's on Invaluable Online Platform Privacy Policy, which can be found on the Sotheby's on Invaluable Live Auction Website.

TERMS OF GUARANTEE

As set forth below and in the Conditions of Sale, for all lots Sotheby's guarantees that the authorship, period, culture or origin (collectively, "Authorship") of each lot in this catalogue is as set out in the **BOLD** or **CAPITALIZED** type heading in the catalogue description of the lot, as amended by oral or written salesroom notes or announcements. Purchasers should refer to the Glossary of Terms, if any, for an explanation of the terminology used in the Bold or Capitalized type heading and the extent of the Guarantee. Sotheby's makes no warranties whatsoever, whether express

or implied, with respect to any material in the catalogue other than that appearing in the Bold or Capitalized heading and subject to the exclusions below.

In the event Sotheby's in its reasonable opinion deems that the conditions of the Guarantee have been satisfied, it shall refund to the original purchaser of record the hammer price and applicable Buyer's Premium paid for the lot by the original purchaser of record.

This Guarantee is provided for a period of five (5) years from the date of the relevant auction, is solely for the benefit of the original purchaser of record at the auction and may not be transferred to any third party. To be able to claim under this Guarantee of Authorship, the original purchaser of record must: (i) notify Sotheby's in writing within three (3) months of receiving any information that causes the original purchaser of record to question the accuracy of the Bold or Capitalized type heading, specifying the lot number, date of the auction at which it was purchased and the reasons for such question; and (ii) return the Lot to Sotheby's at the original selling location in the same condition as at the date of sale to the original purchaser of record and be able to transfer good title to the Lot, free from any third party claims arising after the date of such sale.

Sotheby's has discretion to waive any of the above requirements. Sotheby's may require the original purchaser of record to obtain at the original purchaser of record's cost the reports of two independent and recognized experts in the field, mutually acceptable to Sotheby's and the original purchaser of record. Sotheby's shall not be bound by any reports produced by the original purchaser of record, and reserves the right to seek additional expert advice at its own expense. It is specifically understood and agreed that the rescission of a sale and the refund of the original purchase price paid (the successful hammer price, plus the buyer's premium) is

exclusive and in lieu of any other remedy which might otherwise be available as a matter of law, or in equity. Sotheby's and the Consignor shall not be liable for any incidental or consequential damages incurred or claimed, including without limitation, loss of profits or interest.

ADDITIONAL TERMS AND CONDITIONS FOR LIVE ONLINE BIDDING

The following terms and conditions (the "Online Terms") provide important information related to live online bidding via BIDnow, eBay, Invaluable, and any other Online Platform through which bidding is made available ("Online Platforms").

These Conditions are in addition to and subject to the same law and our standard terms and conditions of sale, including the authenticity guarantee and any other terms and are not intended in any way to replace them. By participating in this sale via any Online Platform, you acknowledge that you are bound by the Conditions of Sale applicable in the relevant sale and by these additional Conditions.

1. The procedure for placing bids via Online Platforms is a one-step process; as soon as the "Bid Now" button is clicked, a bid is submitted. By placing a bid via any Online Platform, you accept and agree that bids submitted in this way are final and that you will not under any circumstances be permitted to amend or retract your bid. If a successful bid is sent to Sotheby's from your computer, phone, tablet, or any other device, you irrevocably agree to pay the full purchase price, including buyer's premium and all applicable taxes and other applicable charges.

2. If you have the leading bid, it will be indicated on the screen with the statement "Bid with you" (on BIDNow) or "You're the highest bidder" (on eBay) or "Bid with you" (on Invaluable). If a bid is placed

online simultaneously with a bid placed by a bidder in the room or on the telephone (a "floor" bid), the "floor" bid generally will take precedence; the auctioneer will have the final discretion to determine the successful bidder or to reopen bidding. The auctioneer's decision is final.

3. The next bidding increment is shown on the screen for your convenience. The auctioneer has discretion to vary bidding increments for bidders in the auction room and on the telephones, but bidders using Online Platforms may not be able to place a bid in an amount other than a whole bidding increment. All bidding for this sale will be in the domestic currency of the sale location, and online bidders will not be able to see the currency conversion board that may be displayed in the auction room.

4. The record of sale kept by Sotheby's will be taken as absolute and final in all disputes. In the event of a discrepancy between any online records or messages provided to you and the record of sale kept by Sotheby's, the record of sale will govern.

5. Online bidders are responsible for making themselves aware of all salesroom notices and announcements. All salesroom notices will be read by the auctioneer at the beginning, where appropriate, or during the sale prior to a relevant lot being offered for sale. Sotheby's recommends that online bidders log on at least ten minutes before the scheduled start of the auction to ensure that you have heard all announcements made by the auctioneer at the beginning of the sale.

6. Sotheby's reserves the right to refuse or revoke permission to bid via Online Platforms and to remove bidding privileges during a sale.

7. Purchase information shown in the "Account Activity" section of BIDnow, the "Purchase History" section of the "My eBay" page on eBay and the "Account Activity"

section of the "My Invaluable" page on Invaluable is provided for your convenience only. Successful bidders will be notified and invoiced by Sotheby's after the sale. In the event of any discrepancy between any online purchase information and the invoice sent to you by Sotheby's following the respective sale, the invoice prevails. Terms and conditions for payment and collection of property remain the same regardless of how the winning bid was submitted.

8. Sotheby's offers online bidding as a convenience to our clients. Sotheby's will not be responsible for any errors or failures to execute bids placed via Online Platforms, including, without limitation, errors or failures caused by (i) a loss of connection to the internet or to the BIDnow, eBay, Invaluable or other Online Platform software by either Sotheby's or the client; (ii) a breakdown or problem with the BIDnow, eBay, Invaluable or other Online Platform software; or (iii) a breakdown or problem with a client's internet connection, mobile network or computer. Sotheby's is not responsible for any failure to execute an online bid or for any errors or omissions in connection therewith.

9. Live online bidding via all Online Platforms will be recorded.

10. In the event of any conflict between these Online Terms and Sotheby's Conditions of Sale and Terms of Guarantee, Sotheby's Conditions of Sale and Terms of Guarantee will control.

11. In the event of any conflict between these Online Terms and any term in any agreement between the User and eBay, these Online Terms will control for purposes of all Sotheby's auctions.

12. In the event of any conflict between these Online Terms and any term in any agreement between the User and Invaluable, these Online Terms will control for purposes of all Sotheby's auctions.

BUYING AT AUCTION

The following will help in understanding the auction buying process as well as some of the terms and symbols commonly used in an auction catalogue. All bidders should read the Conditions of Sale and Terms of Guarantee in this catalogue, as well as the Glossary or any other notices. By bidding at auction, bidders are bound by the Conditions of Sale and Terms of Guarantee, as amended by any oral announcement or posted notices, which together form the sale contract among Sotheby's, the seller (consignor) of the lot and any bidders, including the successful bidder (purchaser).

1. SYMBOL KEY

□ Reserves

Unless indicated by a box (□), all lots in this catalogue are offered subject to a reserve. A reserve is the confidential minimum hammer price at which a lot will be sold. The reserve is generally set at a percentage of the low estimate and will not exceed the low estimate of the lot. If any lots in the catalogue are offered without reserve, such lots will be designated by a box (□). If every lot in a catalogue is offered without a reserve, the Conditions of Sale will so state and this symbol will not be used for each lot.

○ Guaranteed Property

The seller of lots with this symbol has been guaranteed a minimum price from one auction or a series of auctions. This guarantee may be provided by Sotheby's or jointly by Sotheby's and a third party. Sotheby's and any third parties providing a guarantee jointly with Sotheby's benefit financially if a guaranteed lot is sold successfully and may incur a loss if the sale is not successful. If the Guaranteed Property symbol for a lot is not included in the printing of the auction catalogue, a pre-sale or pre-lot announcement will be made indicating that there is a guarantee on the lot.

△ Property in which Sotheby's has an Ownership Interest

Lots with this symbol indicate that Sotheby's owns the lot in whole or in part or has an economic interest in the lot equivalent to an ownership interest.

⇒ Irrevocable Bids

Lots with this symbol indicate that a party has provided Sotheby's with an irrevocable bid on the lot that will be executed during the sale at a value that ensures that the lot will sell. The irrevocable bidder, who may bid in excess of the irrevocable bid, may be compensated for providing the irrevocable bid by receiving a contingent fee, a fixed fee or both. If the irrevocable bidder is the successful bidder, any contingent fee, fixed fee or both (as applicable) for providing the irrevocable bid may be netted against the irrevocable bidder's obligation to pay the full purchase price for the lot and the purchase price reported for the lot shall be net of any such fees. If the irrevocable bid is not secured until after the printing of the auction catalogue, Sotheby's will notify bidders that there is an irrevocable bid on the lot by one or more of the following means: a pre-sale or pre-lot announcement, by written notice at the auction or by including an irrevocable bid symbol in the e-catalogue for the sale prior to the auction. From time to time, Sotheby's or any affiliated company may provide the irrevocable bidder with financing related to the irrevocable bid. If the irrevocable bidder is advising anyone with respect to the lot, Sotheby's requires the irrevocable bidder to disclose his or her financial interest in the lot. If an agent is advising you or bidding on your behalf with respect to a lot identified as being subject to an irrevocable bid, you should request that the agent disclose whether or not he or she has a financial interest in the lot.

∨ Interested Parties

Lots with this symbol indicate that parties with a direct or indirect interest in the lot may

be bidding on the lot, including (i) the beneficiary of an estate selling the lot, or (ii) the joint owner of a lot. If the interested party is the successful bidder, they will be required to pay the full Buyer's Premium. In certain instances, interested parties may have knowledge of the reserve. In the event the interested party's possible participation in the sale is not known until after the printing of the auction catalogue, a pre-sale or pre-lot announcement will be made indicating that interested parties may be bidding on the lot.

⊙ Restricted Materials

Lots with this symbol have been identified at the time of cataloguing as containing organic material which may be subject to restrictions regarding import or export. The information is made available for the convenience of bidders and the absence of the symbol is not a warranty that there are no restrictions regarding import or export of the Lot; bidders should refer to Condition 12 of the Conditions of Sale. Please also refer to the section on Endangered Species in the information on Buying at Auction.

Π Monumental

Lots with this symbol may, in our opinion, require special handling or shipping services due to size or other physical considerations. Bidders are advised to inspect the lot and to contact Sotheby's prior to the sale to discuss any specific shipping requirements.

👤 Premium Lot

In order to bid on "Premium Lots" (👤 in print catalogue or 🍷 in eCatalogue) you must complete the required Premium Lot pre-registration application. You must arrange for Sotheby's to receive your pre-registration application at least three working days before the sale. Sotheby's may require such necessary financial references, guarantees, deposits and/or such other security in its absolute discretion as security for any client wishing to bid at auction. Please bear in mind that we are unable to obtain financial

references over weekends or public holidays. Sotheby's decision whether to accept any pre-registration application shall be final. If your application is accepted you will be provided with a special paddle number. The Bidnow on-line bidding service is not available for Premium Lots.

2. BEFORE THE AUCTION

The Catalogue A catalogue prepared by Sotheby's is published for every scheduled live auction and is available prior to the sale date. The catalogue will help familiarize you with property being offered at the designated auction. Catalogues may be purchased at Sotheby's or by subscription in any categories. For information, please call +1 212 606 7000 or visit sothebys.com. Prospective bidders should also consult sothebys.com for the most up to date cataloguing of the property in this catalogue.

Estimates Each lot in the catalogue is given a low and high estimate, indicating to a prospective buyer a range in which the lot might sell at auction. When possible, the estimate is based on previous auction records of comparable pieces. The estimates are determined several months before a sale and are therefore subject to change upon further research of the property, or to reflect market conditions or currency fluctuations. Estimates should not be relied upon as a representation or prediction of actual selling prices.

Provenance In certain circumstances, Sotheby's may print in the catalogue the history of ownership of a work of art if such information contributes to scholarship or is otherwise well known and assists in distinguishing the work of art. However, the identity of the seller or previous owners may not be disclosed for a variety of reasons. For example, such information may be excluded to accommodate a seller's request for confidentiality or because the

identity of prior owners is unknown given the age of the work of art.

Specialist Advice Prospective bidders may be interested in specific information not included in the catalogue description of a lot. For additional information, please contact either a Sotheby's specialist in charge of the sale (all of whom are listed in the front of the catalogue), or Sotheby's Client Services Department. You may also request a condition report from the specialist in charge.

The Exhibition An exhibition of the auction property will be held the week prior to the auction on the days listed in the front of the catalogue. There you will have the opportunity to view, inspect and evaluate the property yourself, or with the help of a Sotheby's specialist.

Salesroom Notices Salesroom notices amend the catalogue description of a lot after our catalogue has gone to press. They are posted in the viewing galleries and salesroom or are announced by the auctioneer. Please take note of them.

Registration Sotheby's may require such necessary financial references, guarantees, deposits and/or such other security, in its absolute discretion, as security for your bid. If you are not successful on any lot, Sotheby's will arrange for a refund (subject to any right of set off) of the deposit amount paid by you without interest within 14 working days of the date of the sale. Any exchange losses or fees associated with the refund shall be borne by you. Registration to bid on Premium Lots must be done at least 3 business days prior to the sale.

3. DURING THE AUCTION

The Auction Auctions are open to the public without any admission fee or obligation to bid. The auctioneer introduces the objects for sale — known as "lots" — in numerical order as listed in the catalogue. Unless

otherwise noted in the catalogue or by an announcement at the auction, Sotheby's acts as agent on behalf of the seller and does not permit the seller to bid on his or her own property. It is important for all bidders to know that the auctioneer may open the bidding on any lot by placing a bid on behalf of the seller. The auctioneer may further bid on behalf of the seller, up to the amount of the reserve, by placing responsive or consecutive bids for a lot. The auctioneer will not place consecutive bids on behalf of the seller above the reserve.

Bidding in Person If you would like to bid, you must register for a paddle upon entering the salesroom. The paddle is numbered so as to identify you to the auctioneer. To register, you will need a form of identification such as a driver's license, a passport or some other type of government issued identification. If you are a first-time bidder, you will also be asked for your address, phone number and signature in order to create your account. If you are bidding for someone else, you will need to provide a letter from that person authorizing you to bid on that person's behalf. Issuance of a bid paddle is in Sotheby's sole discretion.

Once the first bid has been placed, the auctioneer asks for higher bids, in increments determined by the auctioneer. To place your bid, simply raise your paddle until the auctioneer acknowledges you. You will know when your bid has been acknowledged; the auctioneer will not mistake a random gesture for a bid.

If you wish to register to bid on a Premium Lot, please see the paragraph above.

All lots sold will be invoiced to the name and address in which the paddle has been registered and cannot be transferred to other names and addresses. Sotheby's reserves the right to refuse to accept payment from a source other than the buyer of record.

Absentee Bidding If it is not possible for you to attend the auction in person, you may place your bid ahead of time. In the back of every catalogue there is an absentee bid form, which you can use to indicate the item you wish to bid on and the maximum bid you are willing to make. Return the completed absentee bid form to Sotheby's either by mail or fax. When the lot that you are interested in comes up for sale, a Sotheby's representative will execute the bid on your behalf, making every effort to purchase the item for as little as possible and never exceeding your limit. This service is free and confidential. For detailed instructions and information, please see the Absentee Bid Form and Guide for Absentee Bidders instructions at the back of this catalogue.

Telephone Bidding In some circumstances, we offer the ability to place bids by telephone live to a Sotheby's representative on the auction floor. Please contact the Bid Department prior to the sale to make arrangements or to answer any questions you may have. Telephone bids are accepted only at Sotheby's discretion and at the caller's risk. Calls may also be recorded at Sotheby's discretion. By bidding on the telephone, prospective buyers consent thereto.

Online Bidding If you cannot attend the auction, it may be possible to bid online via BIDnow, eBay, Invaluable or other Online Platforms for selected sales. This service is free and confidential. For information about registering to bid via BIDnow, please see www.sothebys.com. For information about registering to bid on eBay, please see www.ebay.com/sothebys. For information about registering to bid on Invaluable, please see www.invaluable.com/invaluable/help.cfm. Bidders utilizing any online platform are subject to the Online Terms as well as the relevant Conditions of Sale. Online bidding may not be available for Premium Lots.

Employee Bidding Sotheby's employees may bid in a Sotheby's auction only if the employee does not know the reserve and if the employee fully complies with Sotheby's internal rules governing employee bidding.

US Economic Sanctions The United States maintains economic and trade sanctions against targeted foreign countries, groups and organizations. There may be restrictions on the import into the United States of certain items originating in sanctioned countries, including Burma, Cuba, Iran, North Korea and Sudan. The purchaser's inability to import any item into the US or any other country as a result of these or other restrictions shall not justify cancellation or rescission of the sale or any delay in payment. Please check with the specialist department if you are uncertain as to whether a lot is subject to these import restrictions, or any other restrictions on importation or exportation.

Hammer Price and the Buyer's Premium For lots which are sold, the last price for a lot as announced by the auctioneer is the hammer price. A buyer's premium will be added to the hammer price and is payable by the purchaser as part of the total purchase price. The buyer's premium will be the amount stated in the Conditions of Sale.

Currency Board As a courtesy to bidders, a currency board is operated in many salesrooms. It displays the lot number and current bid in both U.S. dollars and foreign currencies. Exchange rates are approximations based on recent exchange rate information and should not be relied upon as a precise invoice amount. Sotheby's assumes no responsibility for any error or omission in foreign or United States currency amounts shown.

Results Successful absentee bidders will be notified after the sale. Absentee bidders will receive a list of sale results if they

enclose a stamped self-addressed envelope with their absentee bid form. Printed lists of auction prices are available at our galleries approximately three weeks following each auction and are sent on request to catalogue purchasers and subscribers. Results may also be obtained online at sothebys.com.

International Auctions If you need assistance placing bids, obtaining condition reports or receiving auction results for a Sotheby's sale outside the United States, please contact our International Client Services Department.

4. AFTER THE AUCTION

Payment If your bid is successful, you can go directly to Post Sale Services to make payment arrangements. Otherwise, your invoice will be mailed to you. The final price is determined by adding the buyer's premium to the hammer price on a per-lot basis. Sales tax, where applicable, will be charged on the entire amount. Payment is due in full immediately after the sale. However, under certain circumstances, Sotheby's may, in its sole discretion, offer bidders an extended payment plan. Such a payment plan may provide an economic benefit to the bidder. Credit terms should be requested at least one business day before the sale. However, there is no assurance that an extended payment plan will be offered. Please contact Post Sale Services or the specialist in charge of the sale for information on credit arrangements for a particular lot. Please note that Sotheby's will not accept payments for purchased lots from any party other than the purchaser, unless otherwise agreed between the purchaser and Sotheby's prior to the sale.

Payment by Cash It is against Sotheby's general policy to accept single or multiple related payments in the form of cash or cash equivalents in excess of the local currency equivalent of US \$10,000. It is Sotheby's

policy to request any new clients or purchasers preferring to make a cash payment to provide: verification of identity (by providing some form of government issued identification containing a photograph, such as a passport, identity card or driver's license), confirmation of permanent address and identification of the source of the funds.

Payment by Credit

Cards Sotheby's accepts payment by credit card for Visa, MasterCard, and American Express only. Credit card payments may not exceed \$50,000 per sale. Payment by credit card may be made (a) online at <https://www.sothebys.com/en/invoice-payment.html>, (b) by calling in to Post Sale Services at +1 212 606 7444, or (c) in person at Sotheby's premises at the address noted in the catalogue.

Payment by Check Sotheby's accepts personal, certified, banker's draft and cashier's checks drawn in US Dollars (made payable to Sotheby's). While personal and company checks are accepted, property will not be released until such checks have cleared, unless you have a pre-arranged check acceptance agreement. Application for check clearance can be made through the Post Sale Services.

Certified checks, banker's drafts and cashier's checks are accepted at Sotheby's discretion and provided they are issued by a reputable financial institution governed by anti-money laundering laws. Instruments not meeting these requirements will be treated as "cash equivalents" and subject to the constraints noted in the prior paragraph titled "Payment By Cash".

Payment by Wire Transfer To pay for a purchase by wire transfer, please refer to the payment instructions on the invoice provided by Sotheby's or contact Post Sale Services to request instructions.

Sales and Use Tax New York sales tax is charged on the hammer price, buyer's premium and any other applicable charges on any property picked up or delivered in New York State, regardless of the state or country in which the purchaser resides or does business. Purchasers who wish to use their own shipper who is not a considered a "common carrier" by the New York Department of Taxation and Finance will be charged New York sales tax on the entire charge regardless of the destination of the property. Please refer to "Information on Sales and Use Tax Related to Purchases at Auction" in the back of the catalogue.

Collection and Delivery

Post Sale Services
+ 1 212 606 7444
FAX: + 1 212 606 7043
uspostsaleservices@sothebys.com

Once your payment has been received and cleared, property may be released. Unless otherwise agreed by Sotheby's, all purchases must be removed by the 30th calendar day following a sale.

Shipping Services Sotheby's offers a comprehensive shipping service to meet all of your requirements. If you received a shipping quotation or have any questions about the services we offer please contact us.

Collecting your Property As a courtesy to purchasers who come to Sotheby's to collect property, Sotheby's will assist in the packing of lots, although Sotheby's may, in the case of fragile articles, choose not to pack or otherwise handle a purchase.

If you are using your own shipper to collect property from Sotheby's, please provide a letter of authorization and kindly instruct your shipper that they must provide a Bill of Lading prior to collection. Both documents must be sent to Post Sale Services prior to collection.

The Bill of Lading must include: the purchaser's full name, the full delivery address including the street name and number, city and state or city and country, the sale and lot number.

Sotheby's will contact your shipper within 24 hours of receipt of the Bill of Lading to confirm the date and time that your property can be collected. Property will not be released without this confirmation and your shipper must bring the same Bill of Lading that was faxed to Sotheby's when collecting. All property releases are subject to the receipt of cleared funds.

Please see the Conditions of Sale for further details.

Endangered Species Certain property sold at auction, for example, items made of or incorporating plant or animal materials such as coral, crocodile, ivory, whalebone, tortoiseshell, rhinoceros horn, rosewood, etc., irrespective of age or value, may require a license or certificate prior to exportation and additional licenses or certificates upon importation to another country. Sotheby's suggests that buyers check on their government wildlife import requirements prior to placing a bid. Please note that the ability to obtain an export license or certificate does not ensure the ability to obtain an import license or certificate in another country, and vice versa. It is the purchaser's responsibility to obtain any export or import licenses and/or certificates as well as any other required documentation. In the case of denial of any export or import license or of delay in the obtaining of such licenses, the purchaser is still responsible for making on-time payment of the total purchase price for the lot.

Although licenses can be obtained to export some types of endangered species, other types may not be exported at all, and other types may not be resold in the United States. Upon request, Sotheby's is willing to assist the purchaser in attempting to obtain the appropriate licenses and/or

certificates. However, there is no assurance that an export license or certificate can be obtained. Please check with the specialist department or the Shipping Department if you are uncertain as to whether a lot is subject to these export/import license and certificate requirements, or any other restrictions on exportation.

The Art Loss Register As part of Sotheby's efforts to support only the legitimate art market and to combat the illegitimate market in stolen property, Sotheby's has retained the Art Loss Register to check all uniquely identifiable items offered for sale in this catalogue that are estimated at more than the equivalent of US\$1,500 against the Art Loss Register's computerized database of objects reported as stolen or lost. The Art Loss Register is pleased to provide purchasers with a certificate confirming that a search has been made. All inquiries regarding search certificates should be directed to The Art Loss Register, First Floor, 63-66 Hatten Garden, London EC1N 8LE or by email at artloss@artloss.com. The Art Loss Register does not guarantee the provenance or title of any catalogued item against which they search, and will not be liable for any direct or consequential losses of any nature howsoever arising. This statement and the ALR's service do not affect your rights and obligations under the Conditions of Sale applicable to the sale.

SELLING AT AUCTION

If you have property you wish to sell, Sotheby's team of specialists and client services representatives will assist you through the entire process. Simply contact the appropriate specialist (specialist departments are listed in the back of this catalogue), General Inquiries Department or a Sotheby's regional office representative for suggestions on how best to arrange for evaluation of your property.

Property Evaluation There are three general ways evaluation of property can be conducted:

(1) In our galleries

You may bring your property directly to our galleries where our specialists will give you auction estimates and advice. There is no charge for this service, but we request that you telephone ahead for an appointment. Inspection hours are 9:30 am to 5 pm, Monday through Friday.

(2) By photograph

If your property is not portable, or if you are not able to visit our galleries, you may bring in or send a clear photograph of each item. If you have a large collection, a representative selection of photographs will do. Please be sure to include the dimensions, artist's signature or maker's mark, medium, physical condition and any other relevant information. Our specialists will provide a free preliminary auction estimate subject to a final estimate upon first-hand inspection.

(3) In your home

Evaluations of property can also be made in your home. The fees for such visits are based on the scope and diversity of property, with travel expenses additional. These fees may be rebated if you consign your property for sale at Sotheby's. If there is considerable property in question, we can arrange for an informal "walkthrough."

Once your property has been evaluated, Sotheby's representatives can then help you determine how to proceed should you wish to continue with the auction process. They will provide information regarding sellers' commission rates and other charges, auction venue, shipping and any further services you may require.

SOTHEBY'S SERVICES

Sotheby's also offers a range of other services to our clients beyond buying and selling at

auction. These services are summarized below. Further information on any of the services described below can be found at sothebys.com.

Valuations and Appraisals

Sotheby's Valuations and Appraisals Services offers advice regarding personal property assets to trusts, estates, and private clients in order to help fiduciaries, executors, advisors, and collectors meet their goals. We provide efficient and confidential advice and assistance for all appraisal and auction services. Sotheby's can prepare appraisals to suit a variety of needs, including estate tax and planning, insurance, charitable contribution and collateral loan. Our appraisals are widely accepted by the Internal Revenue Service, tax and estate planning professionals, and insurance firms. In the event that a sale is considered, we are pleased to provide auction estimates, sales proposals and marketing plans. When sales are underway, the group works closely with the appropriate specialist departments to ensure that clients' needs are met promptly and efficiently.

Financial Services Sotheby's offers a wide range of financial services including advances on consignments, as well as loans secured by art collections not intended for sale.

Museum Services Tailored to meet the unique needs of museums and nonprofits in the marketplace, Museum Services offers personal, professional assistance and advice in areas including appraisals, deaccessions, acquisitions and special events.

Corporate Art Services Devoted to servicing corporations, Sotheby's Corporate Art Services Department can prepare appraisal reports, advise on acquisitions and deaccessions, manage all aspects of consignment, assist

in developing arts-management strategies and create events catering to a corporation's needs.

INFORMATION ON SALES AND USE TAX RELATED TO PURCHASES AT AUCTION

To better assist our clients, we have prepared the following information on Sales and Use Tax related to property purchased at auction.

Why Sotheby's Collects Sales Tax

Virtually all State Sales Tax Laws require a corporation to register with the State's Tax Authorities and collect and remit sales tax if the corporation maintains a presence within the state, such as offices. In the states that impose sales tax, Tax Laws require an auction house, with a presence in the state, to register as a sales tax collector, and remit sales tax collected to the state. New York sales tax is charged on the hammer price, buyer's premium and any other applicable charges on any property picked up or delivered in New York, regardless of the state or country in which the purchaser resides or does business.

Where Sotheby's Collects Sales Tax

Sotheby's is currently registered to collect sales tax in the following states: California, Colorado, Connecticut, Florida, Illinois, Maryland, Massachusetts, Minnesota, Missouri, New Jersey, New York, Ohio, Pennsylvania, Texas and Washington. For any property collected or received by the purchaser in New York City, such property is subject to sales tax at the existing New York State and City rate of 8.875%.

Sotheby's Arranged Shipping

If the property is delivered into any state in which Sotheby's is registered, Sotheby's is required by law to collect and remit the appropriate sales tax in effect in the state where the property is delivered.

Client Arranged Shipping

Property collected from Sotheby's New York premises by a common carrier hired by the purchaser for delivery at an address outside of New York is not subject to New York Sales Tax, but if the property is delivered into any state in which Sotheby's is registered, Sotheby's is required by law to collect and remit the appropriate sales tax in effect in the state where the property is delivered. New York State recognizes shippers such as the United States Postal Service, United Parcel Service, FedEx, or the like as "common carriers". If a purchaser hires a shipper other than a common carrier to pick up property, Sotheby's will collect New York sales tax at a rate of 8.875% regardless of the ultimate destination of the goods. If a purchaser utilizes a freight-forwarder who is registered with the Transportation Security Administration ("TSA") to deliver property outside of the United States, no sales tax would be due on this transaction.

Where Sotheby's is Not Required to Collect Sales Tax

Sotheby's is not required to collect sales tax on property delivered to states other than those listed above. If the property is delivered to a state where Sotheby's is not required to collect sales tax, it is the responsibility of the purchaser to self-assess any sales or use tax and remit it to taxing authorities in that state.

Sotheby's is not required to collect sales tax for property delivered to the purchaser outside of the United States.

Restoration and Other Services

Regardless of where the property is subsequently transported, if any framing or restoration services are performed on the property in New York, it is considered to be a delivery of the property to the purchaser in New York, and Sotheby's will be required to collect the 8.875% New York sales tax.

Certain Exemptions Most states that impose sales taxes allow for specified exemptions to the tax. For example, a registered re-seller such as a registered art dealer may purchase without incurring a tax liability, and Sotheby's is not required to collect sales tax from such re-seller. The art dealer, when re-selling the property, may be required to charge sales tax to its client, or the client may be required to self-assess sales or use tax upon acquiring the property.

Local Tax Advisors As sales tax laws vary from state to state, Sotheby's recommends that clients with questions regarding the application of sales or use taxes to property purchased at auction seek tax advice from their local tax advisors.

IMPORTANT NOTICES

Regarding Jewelry Statements in the catalogue regarding the condition of lots in this sale usually appear in the description. However, the absence of any such reference does not imply that a lot is in perfect condition or completely free from wear or imperfections. Sotheby's will be pleased to offer condition reports of the lots to potential purchasers. Please call the jewelry representatives as set forth in the front of the catalogue.

Any gemological terms used in the catalogue have the same meanings as set forth in the Federal Trade Commission's guides for the jewelry, precious metals and pewter industries. A copy of these guidelines is available from Sotheby's upon request.

Regarding Diamonds Sotheby's shares the concerns expressed by the United Nations Security Council with respect to uncut diamonds potentially coming from Angola and Sierra Leone. We will comply fully with any obligations imposed in connection with the Security Council's resolutions regarding these matters.

Treatment and Condition of Gemstones Traditionally, gemstones have been treated by a variety of techniques to enhance color and generally to improve their appearance. Typically, rubies and sapphires have been heat treated and emeralds have been treated by oil or resin to improve color and clarity. These or other techniques, such as dyeing, irradiation, coating and impregnation, may be used on other gemstones.

Although it is widely believed that heat treatments are permanent, purchasers should assume that any treatment may not be permanent in nature and that over time special care of the stone may be required. Prospective purchasers are reminded that, unless the catalogue description specifically states that a stone is natural, we have assumed that some form of treatment may have been used and that such treatment may not be permanent. Our presale estimates reflect this assumption.

To the extent that Sotheby's has laboratory reports containing specific information on the treatment of a stone, these reports are made available for review by potential purchasers. Available reports from internationally recognized gemological laboratories will be noted in the description of the item. New forms of treatments and new scientific methods to discern them are constantly being developed. Consequently, there may be a lack of consensus among laboratories as to whether gemstones have been treated, the extent of the treatment or the permanence of the treatment.

References in the catalogue descriptions to certificates or reports issued by gemological laboratories are included only for the information of bidders and Sotheby's accepts no responsibility for the accuracy, terms or information contained in such certificates or reports.

Statements in the catalogue regarding the condition of lots in this sale usually appear in the description. However, the absence

of any such reference does not imply that a lot is in perfect condition or completely free from wear or imperfections. Sotheby's will be pleased to offer condition reports on all lots of the sale to potential purchasers. Please call the jewelry representatives set forth in the front of the catalogue.

Gemological Certificates and Reports

References in the catalogue descriptions to certificates or reports issued by gemological laboratories are provided only for the information of bidders, and Sotheby's does not guarantee and accepts no responsibility for the accuracy, terms or information contained in such certificates or reports. Please also note that laboratories may differ in their assessment of a gemstone (including its origin and presence, type and extent of treatments) and their certificates or reports may contain different results.

Certificates of Authenticity

Various manufacturers may not issue certificates of authenticity upon request. Except as specifically noted in the catalogue, Sotheby's will not be required to furnish the purchaser with a certificate of authenticity from the manufacturer at any time. Unless the requirements for a rescission of the sale under the Terms of Guarantee are satisfied, the failure of a manufacturer to issue a certificate will not constitute grounds to rescind the sale.

Country of Origin While Sotheby's attempts to obtain accurate information on the country of origin of the gemstones, in accordance with paragraph 1 of the Conditions of Sale, Sotheby's does not guarantee the correctness of the catalogue or other description of the gemstones including the country of origin.

Regarding Gemstones Originating in Burma (Myanmar) Jadeite and rubies of Burmese origin and articles of jewellery less than 100 years old containing such

gemstones may not be imported into the U.S. Buyers wishing to import non-Burmese rubies or jadeite into the U.S. must obtain certification of non-Burmese origin from a gemological laboratory. There may be costs and delays associated with this process.

With respect to items containing any other types of gemstones originating in Burma (e.g. sapphires), such items may be imported into the U.S. provided that the gemstones were mounted or incorporated into articles of jewellery outside of Burma as long as the setting is not of a temporary nature. Loose gemstones of any type originating in Burma may not be imported into the U.S.

The purchaser's inability to import any item into the U.S. or any other country as a result of these or other restrictions shall not justify cancellation or rescission of the sale or any delay in payment. Please check with the specialist department if you are uncertain as to whether a lot is subject to these import restrictions, or any other restrictions on importation or exportation.

Stone Weights Weights of stones printed in the catalogue and preceded by the words "stated to be," "about" or "approximately" are not guaranteed by Sotheby's. Prospective buyers are reminded that all lots are sold as shown.

Regarding Condition of Watches

Prospective buyers should satisfy themselves by personal inspection as to the condition of each lot. If the prospective buyer is not able to inspect the piece, as a courtesy to our clients, we are pleased to provide an opinion of the condition of the property on request. However, since we are not professional watch restorers, any statement of opinion listed is purely subjective and is not a statement of fact. Condition reports may not specify all mechanical replacements or imperfections to the movement, case, dial, pendulum, separate base(s) or dome or any other replacements or additions to the lot. The absence of a condition report or the absence of a reference to damage in the catalogue does not imply that the

lot is in good condition, working order or free from restoration or repair. Watches in water-resistant cases have no warranties that are made that the watches are currently water-resistant. Please note that we do not guarantee the authenticity of any individual component parts, such as wheels, hands, crowns, crystals, screws, bracelets and leather bands, since subsequent repairs and restoration work may have resulted in the replacement of original parts.

In addition, certain manufacturers will not service or repair pieces if all of the component parts are not original to the piece.

The refusal of a manufacturer to service or repair a piece on this basis does not constitute grounds to rescind the sale under the Terms of Guarantee.

Furthermore, in reference to bands, we do not guarantee the material of manufacture. Please be advised that the purchaser will be responsible for complying with any applicable export and import matters, particularly in relation to endangered species and the United States Department of Fish and Wildlife Services.

Payments and Pick-Up All payments to be made at Client Accounting, 1334 York Avenue. See below for dates and times.

Pick-Up: From the Jewelry Department, 6th Floor, 1334 York Avenue.

The schedule for property pick-up will be as follows:

Thursday, 19 April
10:00 am - 5:00 pm
Friday, 20 April
10:00 am - 5:00 pm
Monday, 23 April
10:00 am - 5:00 pm
Tuesday, 24 April
10:00 am - 5:00 pm
Wednesday, 25 April
10:00 am - 5:00 pm

Decorative Photography

SquareMoose
New York
+1 212 643 2505

Photography

Pauline Shapiro
Ellen Warfield

RING SIZES

Metric	French/Japanese	English	American
37.8252	-	A	1/2
38.4237	-	A1/2	3/4
39.0222	-	B	1
39.6207	-	B1/2	11/4
40.2192	-	C	11/2
40.8177	-	C1/2	13/4
41.4162	1	D	2
42.0147	2	D1/2	21/4
42.6132	-	E	21/2
43.2117	3	E1/2	23/4
43.8102	4	F	3
44.4087	-	F1/2	33/4
45.0072	5	G	31/4
45.6057	-	G1/2	31/2
46.2042	6	H	33/4
46.8027	-	H1/2	4
47.4012	7	I	41/4
47.9997	8	I1/2	41/2
48.5982	-	J	43/4
49.1967	9	J1/2	5
49.7952	10	K	51/4
50.3937	-	K1/2	51/2
50.9922	11	L	53/4
51.5907	-	L1/2	6
52.1892	12	M	61/4
52.7877	13	M1/2	61/2
53.4660	-	N	63/4
54.1044	14	N1/2	7
54.7428	15	O	7
55.3812	-	O1/2	71/4
56.0196	16	P	71/2
56.6580	-	P1/2	73/4
57.2964	17	Q	8

DIAMOND CLARITY GRADING

Clarity grading relates to the impurities in a diamond. All clarity grading is carried out under a 10x magnification. The more impurities in a diamond the lower the price per carat.

FL	Flawless	No blemishes or inclusions
IF	Internally Flawless	No inclusions and only insignificant blemishes.
VVS1 & VVS2	Very Very Slightly Included	Extremely difficult to see, visible only from the back of the stone, or small and shallow enough to be removed easily by repolishing. In VVS2, inclusions are still very difficult to see.
VS1 & VS2	Very Slightly Included	Still difficult to see with the untrained eye.
SI1 & SI2	Slightly Included	Easy (SI1) or very easy (SI2) to see with a 10x lens. When these have been located with a 10x lens, look at the stone with the naked eye and the inclusions can sometimes be spotted
I1, I2 & I3	Imperfect	May be eye-visible face up without the aid of a lens. In I3, they may threaten the stones durability.

DIAMOND COLOR GRADING

GIA	
D	The top color grades, D, E, F, for a diamond is when it looks colorless against a white background.
E	
F	
G	In near colorless diamonds, G, H, I, there is a slight trace of color which will not be apparent to the untrained eye. Stones 0.50Ct or less will look colorless.
H	
I	
J	Diamonds graded J, K, L, will have notable traces of color. Small stones in this range will 'face up' colorless when mounted but larger stones will be tinted.
K	
L	
M	Diamonds graded M-Z will display a yellowish tint even to the untrained eye.
↓	
Z	
Z+	Z+ color grade indicates that the diamond is of fancy color and therefore fall into a different price bracket.

GLOSSARY OF TERMS

The following are examples of the terminology used in this catalogue. Please note that all statements made in this catalogue are made subject to the provisions of the Conditions of Sale and Terms of Guarantee printed in this catalogue:

SIGNATURES

BOLD TYPE HEADING

When the maker's name appears in Bold Type Heading in the catalogue description, in Sotheby's opinion, the piece is by the named jeweler.

NAME OF JEWELER

When we state the name of a maker in the catalogue description below the Bold Type Heading, we mean that, in Sotheby's opinion, although unsigned, the piece is by the named jeweler.

MOUNTING BY

When we state in the catalogue description below the Bold Type Heading "Mounting by _____"; we mean that, in Sotheby's opinion, the mounting is by the jeweler, and the gemstones were not supplied by the jeweler or the piece has been altered in some way after its manufacture.

INDEX OF DIAMONDS

COLOR	CLARITY	CARAT WEIGHT	SHAPE	LOT
D	IF	2.05	Round	545
D	VS1	2.58	Marquise	587
D	VS2	3.43	Round	600
D	SI1	3.68	Square Emerald Cut	594
E	VS2	3.00	Round	706
E	SI2	4.98	Round	537
F	VS1	3.00	Oval	730
F	VS1	0.58	Round	738
G	VS2	1.40	Emerald Cut	593
G	SI1	5.03	Round	699
H	VVS2	3.55	Emerald Cut	745
H	VS2	7.16	Round	617
J	VS2	5.22	Emerald Cut	579
K	VVS2 (Potential)	5.56	Emerald Cut	609
K	VS2	7.91	Emerald Cut	752
K (Faint Brown)	SI1	4.01	Round	616
L	VS2	6.51	Cushion	727
L	SI1	5.77	Round	562
O-P	VS2	7.41	Old European	654
D / D	VVS1 (Potential) / VVS2 (Potential)	1.95 / 2.54	Heart / Pear	739
D / F	VS1 / VS2	1.29 / 1.32	Square Emerald Cut	584
H / I	VS2 / VS2	2.03 / 2.01	Square	646
J / J	SI1 / SI1	1.53 / 1.51	Round	705
J / K	SI1 / VVS2	1.51 / 1.54	Cushion	733
Fancy Brown-Pink	I1	2.58	Round-Cornered Rectangular Modified Brilliant	750
Fancy Vivid Yellow / Fancy Vivid Yellow	VS2 / VS2	1.69 / 1.60	Cut-Cornered Rectangular Modified Brilliant	601
Fancy Yellow	VS2	3.51	Cut-Cornered Rectangular Modified Brilliant	703
Light Gray	SI1	0.30	Round	547

COLORED STONE LIST

RUBY					
LOT	SHAPE	CARAT WEIGHT	ORIGIN	TREATMENT	LAB
612	Oval	6.77	Thai	No Heat	AGL
630	Oval	1.79	Mozambique	No Heat	AGL
658	Cushion	Approx. 2.40	Thai	Heat	AGL
660	Cushion	4.61	Burmese	No Heat	AGL

EMERALD					
LOT	SHAPE	CARAT WEIGHT	ORIGIN	TREATMENT	LAB
583	Square	Approx. 2.10	Colombian	Minor; Modern	AGL
592	Rectangular	Approx. 4.30	Colombian	Insignificant to Minor; Traditional	AGL
599	Cabochon	Approx. 12.50	Colombian	Minor	AGL
655	Rectangular	5.51	Colombian	Minor	AGL
748	Rectangular	6.41	Colombian	Minor	AGL

SAPPHIRE					
LOT	SHAPE	CARAT WEIGHT	ORIGIN	TREATMENT	LAB
418	Cushion	4.41	Burma	No Heat	AGL
450	Oval	13.31	Burma	No Heat	AGL
426	Step	8.74	Ceylon	No Heat	AGL
545	Cushion	25.53	Ceylon	No Heat	AGL
547	Oval	Approx. 9.40	Ceylon	No Heat	AGL
453	Pink Oval	3.36, 3.27	Madagascar	Heat	GIA

Please note that lots 665, 670, 672, 677, 681 and 683 are also accompanied by gemological reports.
For more information visit sothebys.com.

INTERNATIONAL DEPARTMENTS

For a full listing of our offices and salerooms worldwide with detailed information on all of Sotheby's services, visit sothebys.com

David Bennett
Worldwide Chairman,
International Jewelry Division

Gary Schuler
Chairman,
North and South America

Daniela Mascetti
Senior Director,
Deputy Chairman,
Jewelry, Europe

Brett O'Connor
Senior Specialist,
International

Patti Wong
Chairman, Asia
Chairman, Sotheby's Diamonds

Quek Chin Yeow
Chairman, Asia

Laurence Nicolas
Global Managing Director
Jewelry & Watches

Maria Kelly
International Division Director,
Jewelry & Watches

Andres White Correal
Director of International Business
Development

Esther Tadjiev
Director of International
Sales Development

Yang Bu
Business Director,
North America

Rebecca Spencer
Business Director,
Europe

Scott Roworth
Business Director,
Asia

NORTH AMERICA

NEW YORK

Gary Schuler
Frank Everett
Catharine Becket
Robin Wright
Esther Tadjiev
Alexander Eblen
Kendall Reed
+1 212 606 7392

Sotheby's Diamonds
Natasha Mahdavi
+1 212 894 1400

WEST

Carol Elkins
+1 415 772 9027
Quig Bruning
+1 917 497 1058
Yvonne Teng
+1 310 786 1864

EUROPE

GENEVA

David Bennett
Daniela Mascetti
Brett O'Connor
Olivier Wagner

Prince Abdul'Aziz Toussoun ‡
Associate, Europe
+41 22 908 48 49

LONDON

Kristian Spofforth
Nikita Manilal
Justin Roberts
Andres White Correal
Benoit Repellin
Julia Castelli
+44 20 7293 6409

MILAN

Sara Miconi
+39 02 295 00201
Daniela Mascetti
+41 22 908 48 49

PARIS

Gabriella Mantegani
Claire de Truchis-Lauriston
+33 1 5305 5337

AMSTERDAM

Albertine Verlinde
+31 20 550 2204

BRUSSELS

Marianna Lora
+32 2 648 0080

LUGANO

Iris Fabbri
+41 91 993 30 60

MADRID

Andres White Correal
+34 91 576 5714

MONACO

Douglas Walker
+377 93 30 8880

MUNICH

Heinrich Graf von Spreiti
+49 89 2909 5121

ROME

Luisa Lepri
+39 06 699 41791

TEL AVIV

Sigal Mordechai
+972 3 560 1666

DUBAI

Katia Nounou
Noha Hussein
+44 78 4036 7595

VIENNA

Andrea Jungmann
+43 1 512 4772

ASIA

HONG KONG

Quek Chin Yeow
Jessica Wyndham
Flora Wong
Shanne Ng
Yvonne Chu
Cristel Tan
Willy Wong ‡
+852 2822 8112

Sotheby's Diamonds
Lisa Chow
Joanne Ma
+852 2822 8113

CHINA

BEIJING

Lei Tang
+86 10 6408 8890

SHANGHAI

Rachel Shen
+86 21 6288 7500

INDONESIA

Jasmine Prasetyo
+62 21 5797 3603

JAPAN

Aki Uemura
+81 3 3230 2755

MALAYSIA

Walter Cheah ‡
+60 12 208 3917

PHILIPPINES

Angela Hsu
+63 917 815 0075

SINGAPORE

Esther Seet
+65 6732 8239

TAIWAN

Wendy Lin
Nicolette Chou
+886 2 2757 6689

THAILAND

Wannida Saetieo
+66 2 286 0788

Consultant ‡

GUIDE FOR ABSENTEE AND TELEPHONE BIDDERS

If you are unable to attend an auction in person, you may give Sotheby's Bid Department instructions to bid on your behalf by completing the form overleaf. This service is confidential and available at no additional charge.

General

This service is free and confidential.

Please record accurately the lot numbers, descriptions and the top hammer price you are willing to pay for each lot.

We will try to purchase the lot(s) of your choice for the lowest price possible and never for more than the maximum bid amount you indicate.

"Buy" or unlimited bids will not be accepted.

Alternative bids can be placed by using the word "OR" between lot numbers. Then if your bid on an early lot is successful, we will not continue to bid on other lots for you. Or, if your early bids are unsuccessful, we will continue to execute bids for alternative lots until a bid is successful.

Bids must be placed in the same order as in the catalogue.

The form should be used for one sale only – please indicate the sale number, title and date on the form.

Please place your bids as early as possible, as in the event of identical bids the earliest received will take precedence. Wherever possible bids should be submitted at least twenty-four hours before the auction.

Where appropriate, your bids will be rounded down to the nearest amount consistent with the auctioneer's bidding increments.

Absentee bids, when placed by telephone, are accepted only at the caller's risk and must be confirmed by letter or fax to the Bid Department on +1 212 606 7016.

Please note that the execution of written bids is offered as an additional service for no extra charge at the bidder's risk and is undertaken subject to Sotheby's other commitments at the time of the auction; Sotheby's therefore cannot accept liability for error or failure to place such bids, whether through negligence or otherwise.

Successful bidders will receive an invoice detailing their purchases and giving instructions for payment and clearance of goods. Unsuccessful bidders will be advised.

Please note Sotheby's reserves the right to refuse to accept payment from a source other than the buyer of record.

All bids are subject to the conditions of sale and terms of guarantee applicable to the sale printed in the sale catalogue. Buyer's premium in the amount stated in paragraph 3 of the Conditions of Sale in the back of the sale catalogue will be added to the hammer price as part of the total purchase price, plus any applicable sales tax.

In the event that you are successful, payment is due immediately after the sale unless otherwise agreed in advance. Payment may be made by bank transfer, credit card (which may be subject to a convenience fee), check or cash (up to US\$10,000). You will be sent full details on how to pay with your invoice. It is against Sotheby's general policy to accept single or multiple related payments in the form of cash or cash equivalents in excess of US\$10,000.

It is Sotheby's policy to request any new clients or purchasers preferring to make a cash payment to provide: proof of identity (by providing some form of government issued identification containing a photograph, such as a passport, identity card or driver's license) and confirmation of permanent address.

We reserve the right to seek identification of the source of funds received.

Data Protection

Sotheby's will use information provided by its clients (or which Sotheby's otherwise obtains from eBay or other sources relating to its clients) for the provision of auction and other art-related services, loan services, client administration, marketing and otherwise to manage and operate its business, or as required by law, in accordance with Sotheby's Privacy Policy. This will include information such as the client's name and contact details, proof of identity, financial information, records of the client's transactions, and preferences. Some gathering of information about Sotheby's clients will take place using technical means to identify their preferences in order to provide a higher quality of service to them. Sotheby's may also disclose the client information to other Sotheby's Companies and/or third parties acting on their behalf to provide services

for these purposes.

Sometimes, Sotheby's may also disclose this information to carefully selected third parties for their own marketing purposes. If you do not wish your details to be used for this purpose, please email enquiries@sothebys.com.

If the client provides Sotheby's with information that is defined by European data protection laws as "sensitive", the client agrees that it may be used for the purposes set out above.

In the course of these disclosures, personal data collected in the European Economic Area may be disclosed to countries outside the European Economic Area. Although such countries may not have legislation that protects a client's personal information, Sotheby's shall take great care to keep such information secure and in accordance with European data protection principles. By agreeing to these Conditions of Business, the client is agreeing to such disclosure.

Please be aware that Sotheby's may film auctions or other activities on Sotheby's premises and that such recordings may be transmitted over the Internet via Sotheby's website, the eBay website and other Online Platforms. Telephone bids may be recorded.

Under European data protection laws, a client may object, by request and free of charge, to the processing of their information for certain purposes, including direct marketing, and may access and rectify personal data relating to them and may obtain more information about Sotheby's data protection policies by writing to Sotheby's, 34-35 New Bond Street, London W1A 2AA, or 1334 York Avenue, New York, NY 10021, Attn: Compliance, or emailing enquiries@sothebys.com. Sotheby's use of information collected about eBay users may differ and is governed by the terms of the eBay Privacy Policy and Sotheby's on eBay Live Auction Platform Privacy Policy, which can be found on the Sotheby's on eBay Live Auction Website.

Important

Please note that the execution of written and telephone bids is offered as an additional service for no extra charge, and at the bidder's risk. It is undertaken subject to Sotheby's other commitments at the time of the auction. Sotheby's therefore cannot accept liability for failure to place such bids, whether through negligence or otherwise. All bids will be executed and are accepted subject to the "Conditions of Sale" and "Terms of Guarantee" printed in the catalogue for the sale. Please note that a buyer's premium in the amount stated in paragraph 3 of the "Conditions of Sale" in the back of the sale catalogue will be added to the hammer price as part of the total purchase price, plus any applicable sales tax.

New Clients

Please note that we may contact you to request a bank reference. In addition Sotheby's requires a copy of government issued photo ID in order to generate a new account. If you have opened a new account with Sotheby's since 1 December, 2002, and have not already done so, you will be asked to present appropriate documentation confirming your identity before your lots or sale proceeds can be released to you.

For Written/Fixed Bids

- Bids will be executed for the lowest price as is permitted by other bids or reserves.
- "Buy" or unlimited bids will not be accepted and we do not accept "plus one" bids. Please place bids in the same order as in the catalogue.
- Always indicate a "top limit" – the amount up to which you would bid if you were attending the auction yourself.
- Alternative bids can be placed by using the word "or" between lot numbers.
- Where appropriate your written bids will be rounded down to the nearest amount consistent with the auctioneer's bidding increments.

For Telephone Bids

Please clearly specify the telephone number on which you may be reached at the time of the sale, including the country code. We will call you from the saleroom shortly before your lot is offered.

NOTES

INDEX OF MAKERS

Maker	Lot	Maker	Lot
Alan Rocca	688	Ilias Lalaounis	507, 508, 509
Aldo Cipullo	723		
Aletto Brothers	506, 553, 618	Kim Poor	694
		Kwiat	666
Buccellati	513, 527, 622, 623		
Bulgari	517, 518, 556, 626, 627, 628, 629, 642, 710, 717, 757	Marina B	516, 530, 714
		Mauboussin	647
		Michele della Valle	531, 533, 539, 549, 551, 555, 737
Cartier	578, 596, 613, 708, 711, 712, 713, 720, 724, 759, 761, 762, 763	Mikimoto	645
		Oscar Heyman & Brothers	562, 615, 672, 683
David Webb	510, 511, 512, 515, 543, 558, 560, 567, 568, 569, 570, 571, 572, 573, 685, 718, 719, 726, 734	Paloma Picasso for Tiffany & Co.	526
		Piaget	647, 679
David Yurman	684		
		Ruser	599
Elsa Peretti for Tiffany & Co.	597, 621	Schlumberger for Tiffany & Co.	502, 701, 716, 754
Fred	725	Seaman Schepps	550, 606
Fred Leighton	607	Sifen Chang	732
Giovane	722	Taffin	638
Gucci	581	Tiffany & Co.	505, 541, 576, 595, 604, 625, 631, 634, 635, 636, 730
Graff	546, 580, 619, 706	Tony Duquette	534
Hammerman Brothers	611		
Harry Winston	542	Vacheron Constantin	608
Henry Dunay	690, 692, 698	Van Cleef & Arpels	501, 574, 575, 693, 715, 753, 756
		Verdura	691, 700, 760
		Zolotas	519

BOARD OF DIRECTORS

Domenico De Sole

Chairman of the Board

The Duke of Devonshire

Deputy Chairman of the Board

Tad Smith

President and

Chief Executive Officer

Jessica Bibliowicz

Linus W. L. Cheung

Kevin Conroy

Daniel S. Loeb

Olivier Reza

Marsha E. Simms

Diana L. Taylor

Dennis M. Weibling

Harry J. Wilson

**SOTHEBY'S
EXECUTIVE MANAGEMENT**

Jill Bright

**Human Resources
& Administration
Worldwide**

Amy Cappellazzo
**Chairman
Fine Art Division**

Valentino D. Carlotti
**Business Development
Worldwide**

Kevin Ching
**Chief Executive Officer
Asia**

Adam Chinn
**Chief Operating Officer
Worldwide**

Lauren Gioia
**Communications
Worldwide**

David Goodman
**Digital Development
& Marketing
Worldwide**

Mike Goss
Chief Financial Officer

Scott Henry
**Technology & Operations
Worldwide**

Jane Levine
**Chief Compliance Counsel
Worldwide**

Laurence Nicolas
**Global Managing Director
Jewelry & Watches**

Jonathan Olsoff
**General Counsel
Worldwide**

Jan Prasens
**Managing Director
Europe, Middle East, Russia,
India and Africa**

Allan Schwartzman
**Chairman
Fine Art Division**

**SOTHEBY'S INTERNATIONAL
COUNCIL**

Robin Woodhead

**Chairman
Sotheby's International**

John Marion
Honorary Chairman

Juan Abelló
Judy Hart Angelo
Anna Catharina Astrup

Nicolas Berggruen
Philippe Bertherat
Lavinia Borromeo

Dr. Alice Y.T. Cheng
Laura M. Cha
Halit Cingilloğlu

Jasper Conran
Henry Cornell
Quinten Dreesmann

Ulla Dreyfus-Best
Jean Marc Etlin
Tania Fares

Comte Serge de Ganay
Ann Getty
Yassmin Ghandehari

Charles de Gunzburg
Ronnie F. Heyman
Shalini Hinduja

Pansy Ho
Prince Aamyn Aga Khan
Catherine Lagrange

Edward Lee
Jean-Claude Marian
Batia Ofer

Georg von Opel
Marchesa Laudomia Pucci Castellano
David Ross

Patrizia Memmo Ruspoli
Rolf Sachs
René H. Scharf

Biggi Schuler-Voith
Judith Taubman
Olivier Widmaier Picasso

The Hon. Hilary M. Weston,
CM, CVO, OOnt

CHAIRMAN'S OFFICE**AMERICAS**

Lisa Dennison
Benjamin Doller
Andrea Fiuczynski
George Wachter

Lulu Creel
August Uribe

EUROPE

Oliver Barker
Helena Newman
Mario Tavella
Dr. Philipp Herzog von
Württemberg

David Bennett
Lord Dalmeny
Claudia Dwek
Edward Gibbs
Caroline Lang
Lord Poltmore

ASIA

Patti Wong
Richard C. Buckley
Nicolas Chow
Quek Chin Yeow



Sotheby's EST. 1744
Collectors gather here.